



MARSHALL ENGINEERED PRODUCTS CO.

FORM 1482H

CENTRIFUGAL PUMPS

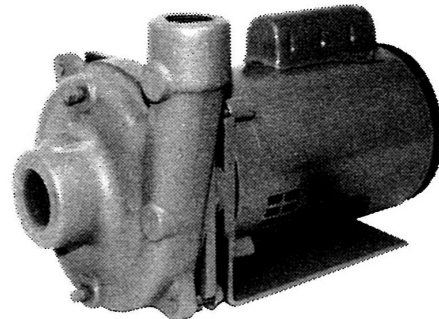
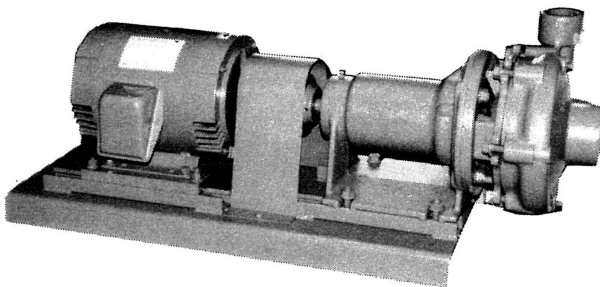
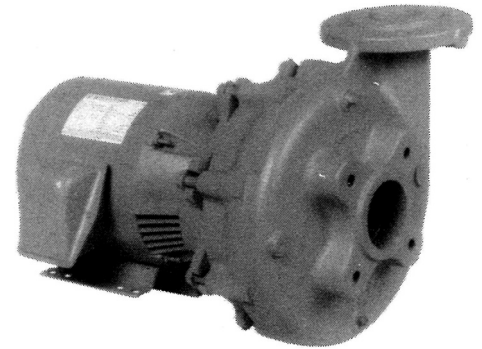
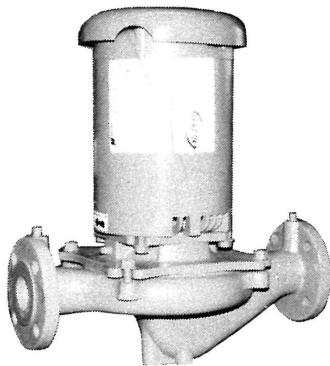
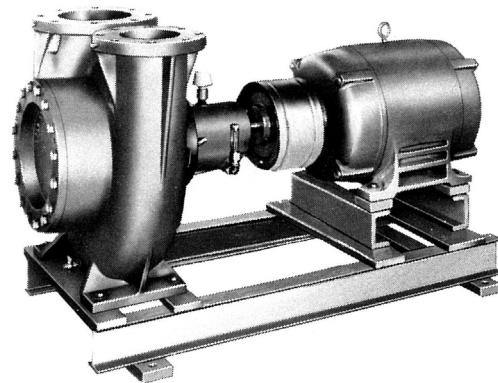
CLOSE COUPLED PUMPS

IN-LINE PUMPS

BASE MOUNTED PUMPS

CIRCULATOR PUMPS

DOUBLE VOLUTE PUMPS

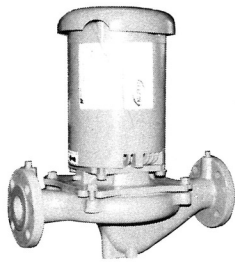


MEPCO's Complete Line of Centrifugal Pumps

Here's a line of centrifugal pumps designed to handle a wide range of applications. Used where water or other general purpose liquids are to be circulated, such as in cooling towers, chilled or hot water circulation systems, drainage and many other institutional, commercial and industrial applications.

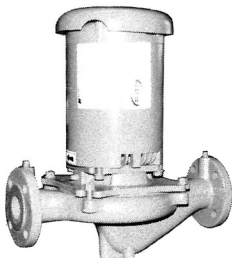
Close-Coupled & In-Line

Close-coupled and In-line pumps are used in supply system applications such as boiler feed, processing, drainage, washer service and booster service. These pumps are also used as circulators in evaporative condensers, cooling towers, hot water and chilled water systems.



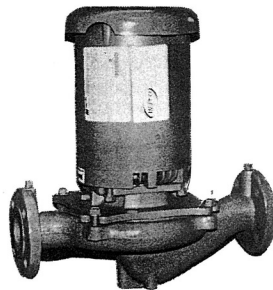
Model RP07

The MEPCO Type RP07 pump is of the volute type for horizontal or vertical installation. Thirty models are available in the RP07 pump with ranges to 25 HP and capacities to 450 GPM, 110 PSI. Refer to Form No. 1619.



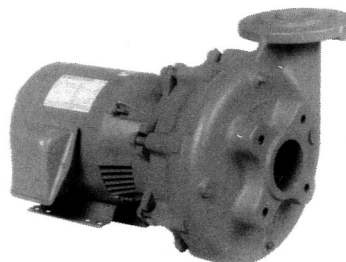
Model RP05 & RP06

The MEPCO Type RP05 & RP06 pump is of the volute type for horizontal or vertical installation. Eight models are available in the RP05 & RP06 pump with ranges to 3 HP and capacities to 120 GPM, 60 PSI. Refer to Form No. 1617.



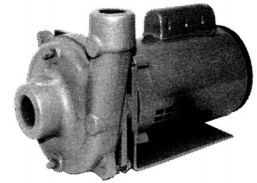
Model RP09

The MEPCO Type RP09 pump is of the volute type for horizontal or vertical installation. Twenty-eight models are available in the RP09 pump with ranges to 60 HP and capacities to 480 GPM, 165 PSI. Refer to Form No. 1620.



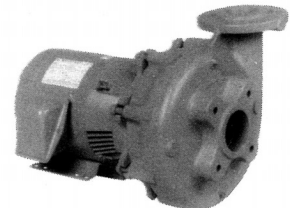
Model RC09

The MEPCO Type RC09 pump is of the volute type for horizontal or vertical installation. Forty-one models are available in the RC09 pump with ranges from 1 HP to 60 HP and capacities to 500 GPM, 170 PSI. Sizes over 2" are with flanged case. Refer to Form No. 1611.



Model RC05 & RC06

The MEPCO Type RC05 & RC06 pump is of the volute type for horizontal or vertical installation. Forty models are available in the RC05 & RC06 pump with ranges from 1/3 HP to 20 HP and capacities to 480 GPM, 75 PSI. Refer to Form Nos. 1602 & 1603.

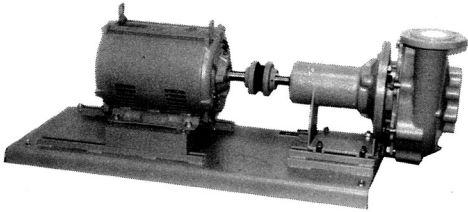


Model RC07

The MEPCO Type RC07 pump is of the volute type for horizontal or vertical installation. Fifty-four models are available in the RC07 pump with ranges from 1 HP to 30 HP and capacities to 600 GPM, 110 PSI. Sizes over 2" are with flanged case. Refer to Form No. 1610.

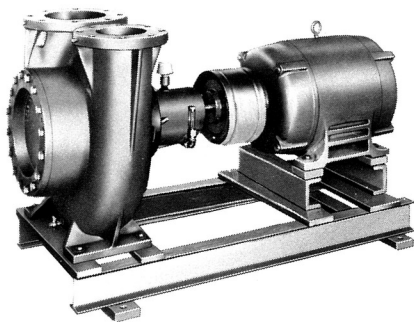
Base Mounted

Base Mounted pumps are most commonly applied for water circulation to be used for heating or air conditioning. The particular quietness of these pumps makes them most suitable for handling hot and chilled water for hydronic systems. They are also very successfully applied for condenser water, domestic hot water and water supply systems.



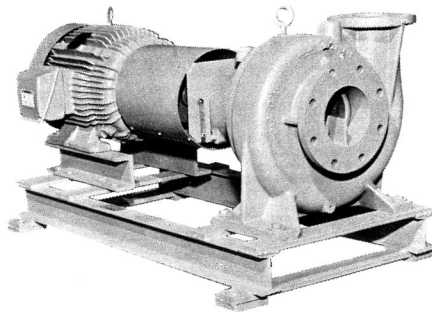
Model RB12

The MEPCO Type RB12 pump is of the volute type for horizontal mounting. Fifty-six models are available in the RB12 pump with ranges to 75 HP and capacities to 2400 GPM, 75 PSI. Refer to Form No. 1616.



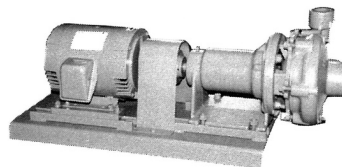
Model FB11

The MEPCO Type FB11 pump is of double volute type for horizontal mounting. Particularly suited for applications where net positive suction head available may be limited. Ten models are available with ranges from 7-1/2 HP to 75 HP and capacities to 2600 GPM, 55 PSI. Refer to Form No. 1433.



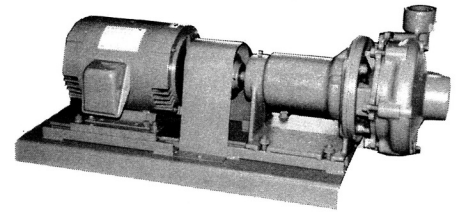
Model E

The MEPCO type E pump is of double volute type for horizontal mounting. Thirty-two models are available in the E pump with ranges from 7-1/2 HP to 150 HP and capacities to 2600 GPM, 100 PSI. Refer to Form No. 1451.



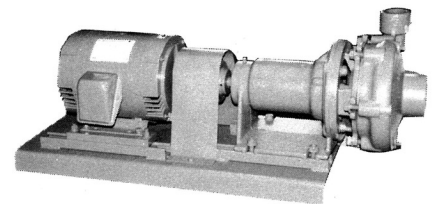
Model RB06

The MEPCO Type RB06 pump is of the volute type for horizontal mounting. Thirty-six models are available in the RB06 pump with ranges to 20 HP and capacities to 480 GPM, 75 PSI. Refer to Form No. 1613.



Model RB09

The MEPCO Type RB09 pump is of the volute type for horizontal mounting. Twenty-one models are available in the RB09 pump with ranges to 60 HP and capacities to 500 GPM, 170 PSI. Refer to Form No. 1615.



Model RB07

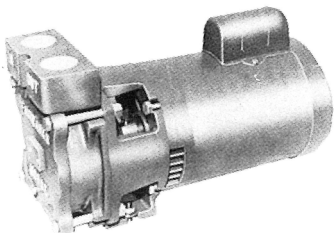
The MEPCO Type RB07 pump is of the volute type for horizontal mounting. Twenty-four models are available in the RB07 pump with ranges to 30 HP and capacities to 600 GPM, 110 PSI. Refer to Form No. 1614.

MEPCO/WESTCO Turbine Pumps

The WESTCO regenerative turbine can be used for a wide range of services and applications due to its excellent suction characteristics, ability to handle entrained vapors/gases, high temperature capability without internal binding, high-pressure reserve and slower rotation assuring long life. Typical applications found in boiler houses, chemical plants, canneries, dairies, greenhouses, and cement plants, distilleries, breweries, boats/ships and factories. Bronze fitted construction comes as standard, but all bronze as well as all iron construction is available. Refer to form #1484 for operation, features and dimensions.

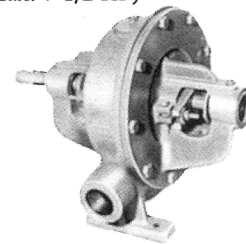
Model 6801

Close Coupled, 30 GPM to 290 PSI, 1750 or 3450 RPM with mechanical seals. High performance in a very small package. (Max. 3 HP)



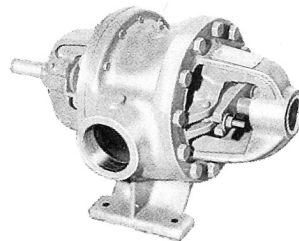
Model 6830, B-5

Base mounted, 58 GPM to 260 PSI, 1750 RPM, with either packing or standard type 2 mechanical seals. (Max. 7-1/2 HP)



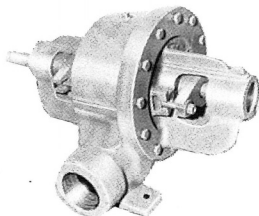
Model 6840

Base mounted, 79 GPM to 450 PSI, 1750 or 3450 RPM. (Max. 15 HP)



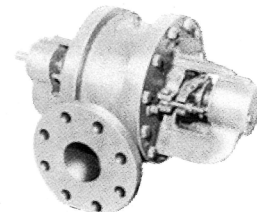
Model 6830, B-6

Base mounted, 185 GPM to 215 PSI, 1750 RPM. (Max. 15 HP)



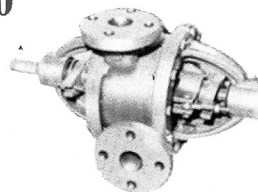
Model 6853

Base mounted, 200 GPM to 330 PSI, 1750 RPM. (Max. 25 HP)



Model 6880

Multi-stage, base mounted pump, 68 GPM, to 520 PSI, 1750 RPM. (Max. 15 HP)



MARSHALL ENGINEERED PRODUCTS CO.

3056 Walker Ridge Drive, Suite C, Grand Rapids, Michigan 49544
Phone 616.246.1431 Fax 616.246.1445 www.mepcollc.com