

2DL3F20K0-TFC



HCFC, R-22 ,Mid Point, 60 Hz, 3 - Phase, 208/230 V

Low Temperature

Production Status: Available for sale to all U.S. customers. Please check with your local Emerson Climate Technologies Representative for international availability.

Performance

Evap(°F)/Cond(°F)	<u>-25/105</u>	<u>-40/105</u>
RG(°F)/Liq(°F)	<u>65/105</u>	<u>65/105</u>
Capacity (Btu/hr):	16100	8660
Power (Watts):	3260	2420
Current (Amps):	12.1	10.5
EER (Btu/Wh):	4.9	3.6
Mass Flow(lbs/hr):	215	115
Sound Power (dBA):	0 Ave	0 Max
Vibration(mils(peak-peak)):	0.0 Ave	0.0 Max

Mechanical

Number of Cylinders:	2	CIR (in ³ /Rev):	16.592
Bore Size (in):	2.5	CFH (ft ³ /hr):	1008.137
Stroke (in):	1.69		
Overall Length (in):	23.25	Mounting Length (in):	11.63
Overall Width (in):	15.44	Mounting Width (in):	11.0
Overall Height (in):	17.09	Mounting Height (in):	18.13*
Suction Size(in):	1 3/8	Sweat	
Discharge Size (in):	7/8	Sweat	
Initial Oil Charge (oz):	80		
Oil Recharge (oz):	72		
Net Weight (lbs):	325.0		

*Overall compressor height on Copeland specified mounting grommets

Electrical

RLA:	26.3	UL File No.:	SA-2337	Max Operating Current(Amps):	
LRA-Low:		UL File Date:	13-Jul-1988	MCC (Amps):	33.8
LRA-High:	161.0	CSA File No.:	LR3104C	RPM:	
LRA-Half Winding:					

Alternate Applications

Refrigerant	Frequency(Hz)	Phase	Voltage	Application
R-22 HCFC	50	3	200/220	Low Temperature
R-502 CFC	50	3	200/220	Low Temperature
R-502 CFC	60	3	208/230	Low Temperature

2DL3F20KE-TFC



HFC, R-404A ,Mid Point, 60 Hz, 3 - Phase, 208/230 V

Low Temp, Low Condensing

Production Status: Available for sale to all U.S. customers. Please check with your local Emerson Climate Technologies Representative for international availability.

Performance

Evap(°F)/Cond(°F)	-25/105	-40/105
RG(°F)/Liq(°F)	65/105	65/105
Capacity (Btu/hr):	19900	11900
Power (Watts):	3800	2870
Current (Amps):	15.2	13
EER (Btu/Wh):	5.2	4.1
Mass Flow(lbs/hr):	357	212
Sound Power (dBA):	0 Ave 0 Max	
Vibration(mils(peak-peak)):	0.0 Ave 0.0 Max	

Mechanical

Number of Cylinders:	2	CIR (in ³ /Rev):	16.592
Bore Size (in):	2.5	CFH (ft ³ /hr):	1008.137
Stroke (in):	1.69		
Overall Length (in):	23.25	Mounting Length (in):	11.63
Overall Width (in):	15.44	Mounting Width (in):	11.0
Overall Height (in):	17.09	Mounting Height (in):	18.13*
Suction Size(in):	1 3/8	Sweat	
Discharge Size (in):	7/8	Sweat	
Initial Oil Charge (oz):	80		
Oil Recharge (oz):	72		
Net Weight (lbs):	325.0		

*Overall compressor height on Copeland specified mounting grommets

Electrical

RLA:	26.3	UL File No.:	SA-2337	Max Operating Current(Amps):	
LRA-Low:		UL File Date:	13-Jul-1988	MCC (Amps):	36.8
LRA-High:	161.0	CSA File No.:	LR3104C	RPM:	
LRA-Half Winding:					

Alternate Applications

Refrigerant	Frequency(Hz)	Phase	Voltage	Application
R-404A HFC	50	3	200/220	Low Temp, Low Condensing
R-507 HFC	50	3	200/220	Low Temp, Low Condensing
R-507 HFC	50	3	200/220	Low Temperature
R-507 HFC	60	3	208/230	Low Temp, Low Condensing
R-507 HFC	60	3	208/230	Low Temperature

2DL3F20KE-TFC



HFC , R-407A, Mid Point, 60 Hz, 3 - Phase, 208/230 V

Low Temperature

Production Status: Available for sale to all U.S. customers. Please check with your local Emerson Climate Technologies representative for international availability.

Performance

Evap(°F)/Cond(°F)	-25/105	-40/105
RG(°F)/Liq(°F)	65/105	65/105
Capacity (Btu/hr):	15350	7940
Power (Watts):	3140	2300
Current (Amps):	12.1	10.7
EER (Btu/Wh):	4.9	3.45
Mass Flow (lbs/hr):	215.0	111.0
Sound Power(dBA):	0 Ave 0 Max	
Vibration (mils(peak-peak)):	0.0 Ave 0.0 Max	
Record Date:	2008-07-11	

Mechanical

Number of Cylinders:	2	Displ (in ³ /Rev):	16.592
Bore Size (in):	2.5	Displ (ft ³ /hr):	1008.137
Stroke (in):	1.69		
Overall Length (in):	23.25	Mounting Length (in):	11.63
Overall Width (in):	15.44	Mounting Width(in):	11.0
Overall Height (in):	17.09	Mounting Height (in):	18.13*
Suction Size (in):	1 3/8 Sweat		
Discharge Size (in):	7/8 Sweat		
Initial Oil Charge (oz):	80		
Oil Recharge (oz):	72		
Net Weight (lbs):	325.0		
Internal Free Volume (in ³):			
HorsePower	3.5		
* Overall compressor height on Copeland Brand Product's specified mounting grommets.			

Electrical

LRA-High*:	161.0	MCC (Amps):	33.8	UL File No.:	
LRA-Half Winding:		RPM:		UL File Date:	13-Jul-1988
LRA-Low*:		Max Operating Current:		CSA File No.:	
RLA(=MCC/1.4; use for contactor selection):	24.1				
RLA (=MCC/1.56; use for breaker & wire size selection):	21.7				
*Low and High refer to the low and high nominal voltage ranges for which the motor is approved.					

Alternate Applications

Refrigerant	Frequency(Hz)	Phase	Voltage	Application
R-22 HCFC	50	3	200/220	Low Temperature
R-404A HFC	50	3	200/220	Low Temp, Low Condensing
R-407A HFC	50	3	200/220	
R-407C HFC	50	3	200/220	
R-502 CFC	50	3	200/220	Low Temperature
R-507 HFC	50	3	200/220	Low Temp, Low Condensing
R-22 HCFC	60	3	208/230	Low Temperature
R-404A HFC	60	3	208/230	Low Temp, Low Condensing
R-407C HFC	60	3	208/230	
R-407C HFC	60	3	208/230	Low Temperature
R-502 CFC	60	3	208/230	Low Temperature
R-507 HFC	60	3	208/230	Low Temp, Low Condensing

2DL3F20KE-TFC



HFC, R-407C, Mid Point, 60 Hz, 3 - Phase, 208/230 V

Low Temperature

Production Status: Available for sale to all U.S. customers. Please check with your local Emerson Climate Technologies representative for international availability.

Performance

Evap(°F)/Cond(°F)	-25/105	-40/105
RG(°F)/Liq(°F)	65/105	65/105
Capacity (Btu/hr):	14350	7280
Power (Watts):	3040	2220
Current (Amps):	12.1	10.7
EER (Btu/Wh):	4.7	3.3
Mass Flow (lbs/hr):	184.0	94.0
Sound Power(dBA):	0 Ave 0 Max	
Vibration (mils(peak-peak)):	0.0 Ave 0.0 Max	
Record Date:	2008-11-24	

Mechanical

Number of Cylinders:	2	Displ (in ³ /Rev):	16.592
Bore Size (in):	2.5	Displ (ft ³ /hr):	1008.137
Stroke (in):	1.69		
Overall Length (in):	23.25	Mounting Length (in):	11.63
Overall Width (in):	15.44	Mounting Width(in):	11.0
Overall Height (in):	17.09	Mounting Height (in):	18.13*
Suction Size (in):	1 3/8 Sweat		
Discharge Size (in):	7/8 Sweat		
Initial Oil Charge (oz):	80		
Oil Recharge (oz):	72		
Net Weight (lbs):	325.0		
Internal Free Volume (in ³):			
HorsePower	3.5		
* Overall compressor height on Copeland Brand Product's specified mounting grommets.			

Electrical

LRA-High*:	161.0	MCC (Amps):	33.8	UL File No.:	
LRA-Half Winding:		RPM:		UL File Date:	
LRA-Low*:		Max Operating Current:		CSA File No.:	
RLA(=MCC/1.4; use for contactor selection):	24.1				
RLA (=MCC/1.56; use for breaker & wire size selection):	21.7				
*Low and High refer to the low and high nominal voltage ranges for which the motor is approved.					

Alternate Applications

Refrigerant	Frequency(Hz)	Phase	Voltage	Application
R-22 HCFC	50	3	200/220	Low Temperature
R-404A HFC	50	3	200/220	Low Temp, Low Condensing
R-407A HFC	50	3	200/220	
R-407C HFC	50	3	200/220	
R-502 CFC	50	3	200/220	Low Temperature
R-507 HFC	50	3	200/220	Low Temp, Low Condensing
R-22 HCFC	60	3	208/230	Low Temperature
R-404A HFC	60	3	208/230	Low Temp, Low Condensing
R-407A HFC	60	3	208/230	Low Temperature
R-407C HFC	60	3	208/230	
R-502 CFC	60	3	208/230	Low Temperature
R-507 HFC	60	3	208/230	Low Temp, Low Condensing

2DL3F20K0-TFC



CFC, R-502 ,Mid Point, 60 Hz, 3 - Phase, 208/230 V

Low Temperature

Production Status: This compressor and/or application of this compressor is not available to U.S. OEM customers. A field replacement is currently available through a U.S. Emerson Climate Technologies Wholesaler. Please check with your local Emerson Climate Technologies Representative for international availability.

Performance

Evap(°F)/Cond(°F)	-25/105	-40/105
RG(°F)/Liq(°F)	65/105	65/105
Capacity (Btu/hr):	19600	12100
Power (Watts):	3650	2830
Current (Amps):	13.1	11.4
EER (Btu/Wh):	5.4	4.3
Mass Flow(lbs/hr):	391	239
Sound Power (dBA):	0 Ave 0 Max	
Vibration(mils(peak-peak)):	0.0 Ave 0.0 Max	

Mechanical

Number of Cylinders:	2	CIR (in ³ /Rev):	16.592
Bore Size (in):	2.5	CFH (ft ³ /hr):	1008.137
Stroke (in):	1.69		
Overall Length (in):	23.25	Mounting Length (in):	11.63
Overall Width (in):	15.44	Mounting Width (in):	11.0
Overall Height (in):	17.09	Mounting Height (in):	18.13*
Suction Size(in):	1 3/8	Sweat	
Discharge Size (in):	7/8	Sweat	
Initial Oil Charge (oz):	80		
Oil Recharge (oz):	72		
Net Weight (lbs):	325.0		

*Overall compressor height on Copeland specified mounting grommets

Electrical

RLA:	26.3	UL File No.:		Max Operating Current(Amps):	
LRA-Low:		UL File Date:		MCC (Amps):	36.8
LRA-High:	161.0	CSA File No.:		RPM:	
LRA-Half Winding:					

Alternate Applications

Refrigerant	Frequency(Hz)	Phase	Voltage	Application
R-22 HCFC	50	3	200/220	Low Temperature
R-502 CFC	50	3	200/220	Low Temperature
R-22 HCFC	60	3	208/230	Low Temperature

2DL3F20KE-TFC



HFC, R-507 ,Mid Point, 60 Hz, 3 - Phase, 208/230 V

Low Temp, Low Condensing

Production Status: Available for sale to all U.S. customers. Please check with your local Emerson Climate Technologies Representative for international availability.

Performance

Evap(°F)/Cond(°F)	-25/105	-40/105
RG(°F)/Liq(°F)	65/105	65/105
Capacity (Btu/hr):	20500	12200
Power (Watts):	3880	2930
Current (Amps):	15.4	13.2
EER (Btu/Wh):	5.3	4.2
Mass Flow(lbs/hr):	378	223
Sound Power (dBA):	0 Ave 0 Max	
Vibration(mils(peak-peak)):	0.0 Ave 0.0 Max	

Mechanical

Number of Cylinders:	2	CIR (in ³ /Rev):	16.592
Bore Size (in):	2.5	CFH (ft ³ /hr):	1008.137
Stroke (in):	1.69		
Overall Length (in):	23.25	Mounting Length (in):	11.63
Overall Width (in):	15.44	Mounting Width (in):	11.0
Overall Height (in):	17.09	Mounting Height (in):	18.13*
Suction Size(in):	1 3/8	Sweat	
Discharge Size (in):	7/8	Sweat	
Initial Oil Charge (oz):	80		
Oil Recharge (oz):	72		
Net Weight (lbs):	325.0		

*Overall compressor height on Copeland specified mounting grommets

Electrical

RLA:	26.3	UL File No.:	SA-2337	Max Operating Current(Amps):	
LRA-Low:		UL File Date:	13-Jul-1988	MCC (Amps):	36.8
LRA-High:	161.0	CSA File No.:	LR3104C	RPM:	
LRA-Half Winding:					

Alternate Applications

Refrigerant	Frequency(Hz)	Phase	Voltage	Application
R-404A HFC	50	3	200/220	Low Temp, Low Condensing
R-507 HFC	50	3	200/220	Low Temp, Low Condensing
R-507 HFC	50	3	200/220	Low Temperature
R-404A HFC	60	3	208/230	Low Temp, Low Condensing
R-507 HFC	60	3	208/230	Low Temperature

RATING CONDITIONS

65 °F Return Gas
 0 °F Subcooling
 95 °F Ambient Air Over

60 Hz Operation

LOW

TEMPERATURE

Use only with Demand Cooling®
 Refer to AE 4-1287

2DL3F20K0-TFC

COPELAMETIC® HCFC-22

DISCUS® COMPRESSOR

TFC 208/230-3-60

Condensing Temperature °F

(Sat Dew Pt Pressure, psig)

Evaporating Temperature °F (Sat Dew Pt Pressure, psig)

	130	-40 (0.5)	-35 (2.6)	-30 (4.9)	-25 (7.4)	-20 (10)	-15 (13)	-10 (16)	-5 (20)	0 (24)
130 (297)	C	4940	6650	8700	11100	13800	16800	20100	23700	27600
	P	2180	2560	2940	3300	3650	4000	4340	4660	4980
	A	10.2	10.9	11.6	12.3	13	13.7	14.5	15.2	16
	M	74	99	130	166	207	253	303	359	419
	E	2.3	2.6	3	3.4	3.8	4.2	4.6	5.1	5.5
	%	43.2	46.9	50.7	54.4	57.8	60.8	63.4	65.6	67.3
120 (260)	C	6490	8370	10600	13200	16100	19300	22800	26700	30800
	P	2330	2670	3000	3330	3640	3950	4260	4550	4840
	A	10.4	11	11.7	12.3	12.9	13.6	14.3	15	15.7
	M	92	119	151	188	230	276	328	384	445
	E	2.8	3.1	3.5	4	4.4	4.9	5.4	5.9	6.4
	%	48.3	51.3	54.6	57.8	60.7	63.3	65.5	67.3	68.7
110 (226)	C	7960	10000	12400	15200	18300	21700	25400	29500	33900
	P	2400	2710	3000	3290	3580	3860	4130	4390	4650
	A	10.5	11.1	11.6	12.2	12.8	13.4	14	14.6	15.2
	M	108	136	169	207	249	297	349	406	467
	E	3.3	3.7	4.1	4.6	5.1	5.6	6.2	6.7	7.3
	%	52	54.7	57.6	60.4	63	65.2	67.1	68.6	69.6
105 (211)	C	8660	10800	13300	16100	19300	22800	26700	30900	35400
	P	2420	2700	2990	3260	3530	3790	4050	4300	4550
	A	10.5	11.1	11.6	12.1	12.7	13.2	13.8	14.4	15
	M	115	144	177	215	258	306	359	416	478
	E	3.6	4	4.4	4.9	5.5	6	6.6	7.2	7.8
	%	53.4	56	58.8	61.5	63.9	66.1	67.8	69	69.8
100 (196)	C	9350	11600	14100	17100	20400	24000	28000	32300	36900
	P	2420	2690	2960	3220	3470	3720	3960	4200	4440
	A	10.5	11	11.5	12	12.6	13.1	13.6	14.2	14.7
	M	122	151	184	223	266	315	367	425	487
	E	3.9	4.3	4.8	5.3	5.9	6.4	7.1	7.7	8.3
	%	54.8	57.2	59.9	62.5	64.8	66.7	68.3	69.3	69.9
90 (168)	C	10700	13000	15800	18900	22400	26200	30400	34900	39800
	P	2390	2630	2870	3100	3330	3550	3770	3990	4210
	A	10.5	10.9	11.3	11.8	12.3	12.7	13.2	13.7	14.2
	M	134	163	198	237	281	330	384	442	505
	E	4.5	5	5.5	6.1	6.7	7.4	8.1	8.7	9.5
	%	57	59.4	61.9	64.2	66.2	67.7	68.9	69.5	69.6
80 (144)	C	12000	14500	17400	20700	24400	28400	32800	37500	42600
	P	2330	2540	2750	2960	3160	3370	3570	3770	3970
	A	10.4	10.7	11.1	11.5	11.9	12.4	12.8	13.2	13.7
	M	144	175	210	250	295	345	399	457	520
	E	5.1	5.7	6.3	7	7.7	8.4	9.2	10	10.7
	%	59	61.2	63.4	65.4	67	68.2	68.8	68.9	68.4
70 (121)	C	13200	15900	19000	22400	26300	30500	35100	40100	45400
	P	2240	2430	2620	2800	2990	3180	3360	3550	3730
	A	10.2	10.5	10.9	11.2	11.6	12	12.4	12.7	13.1
	M	154	185	221	262	307	358	412	471	535
	E	5.9	6.5	7.2	8	8.8	9.6	10.4	11.3	12.2
	%	60.6	62.7	64.6	66.1	67.3	67.9	67.9	67.3	66.1

Nominal Performance Values (±5%) based on 72 hours run-in. Subject to change without notice.

C:Capacity(Btu/hr), P:Power(Watts), A:Current(Amps), M:Mass Flow(lbs/hr), E:EER(Btu/Watt-hr), %:Isentropic Efficiency(%)



RATING CONDITIONS

65 °F Return Gas
 0 °F Subcooling
 95 °F Ambient Air Over

60 Hz Operation

LOW

TEMPERATURE

HFCs Require Use of Polyol Ester
 Lubricant Approved by Copeland
 Corp. Bulletin AE-1248

2DL3F20KE-TFC

COPELAMETIC® HFC-404A

DISCUS® COMPRESSOR

TFC 208/230-3-60

Condensing Temperature °F

(Sat Dew Pt Pressure, psig)

Evaporating Temperature °F (Sat Dew Pt Pressure, psig)

	130 (354)	-40 (4.5)	-35 (7.1)	-30 (9.9)	-25 (13)	-20 (16)	-15 (20)	-10 (24)	-5 (28)	0 (33)
130	C	7410	9460	11700	14000	16500	19200	22200	25400	28900
	P	2650	3050	3450	3840	4220	4590	4960	5300	5650
	A	12.5	13.4	14.4	15.3	16.2	17.2	18.1	19.1	20.1
	M	164	209	257	310	367	430	498	575	655
	E	2.8	3.1	3.4	3.6	3.9	4.2	4.5	4.8	5.1
	%	61.5	64.3	66.4	68	69.3	70.3	71.2	71.9	72.3
120	C	9230	11400	13800	16400	19200	22200	25500	29100	33000
	P	2780	3150	3510	3860	4210	4550	4880	5200	5550
	A	12.8	13.6	14.5	15.3	16.2	17	17.9	18.8	19.7
	M	185	229	277	330	388	451	520	595	680
	E	3.3	3.6	3.9	4.2	4.6	4.9	5.2	5.6	6
	%	63.2	65.4	67.2	68.5	69.6	70.6	71.3	71.9	72.3
110	C	11000	13400	15900	18700	21800	25100	28800	32800	37100
	P	2850	3190	3510	3830	4150	4450	4750	5050	5350
	A	13	13.7	14.5	15.2	16	16.8	17.6	18.3	19.1
	M	203	247	295	348	407	471	540	620	705
	E	3.9	4.2	4.5	4.9	5.3	5.6	6.1	6.5	7
	%	64.4	66.2	67.7	68.9	69.9	70.7	71.4	71.8	72.1
105	C	11900	14300	17000	19900	23100	26600	30400	34600	39200
	P	2870	3190	3500	3800	4100	4390	4680	4950	5250
	A	13	13.7	14.4	15.2	15.9	16.6	17.4	18.1	18.9
	M	212	255	304	357	415	480	550	630	715
	E	4.1	4.5	4.9	5.2	5.6	6.1	6.5	7	7.5
	%	64.9	66.5	67.9	69	70	70.8	71.4	71.8	72
100	C	12800	15300	18000	21100	24400	28000	32000	36400	41200
	P	2880	3180	3480	3760	4040	4320	4590	4850	5100
	A	13.1	13.7	14.4	15.1	15.7	16.4	17.1	17.8	18.5
	M	219	263	312	365	424	489	560	640	725
	E	4.4	4.8	5.2	5.6	6	6.5	7	7.5	8.1
	%	65.3	66.8	68.1	69.1	70	70.8	71.3	71.7	71.8
80	C	16200	19000	22200	25700	29600	33800	38500	43700	49300
	P	2840	3070	3300	3530	3740	3960	4160	4360	4560
	A	13	13.5	14	14.5	15	15.5	16.1	16.6	17.1
	M	247	291	339	394	454	520	595	675	765
	E	5.7	6.2	6.7	7.3	7.9	8.6	9.3	10	10.8
	%	66	67.2	68.2	69.1	69.8	70.3	70.6	70.6	70.4
70	C	17900	20900	24200	28000	32100	36700	41800	47300	53500
	P	2770	2980	3180	3370	3560	3740	3920	4090	4250
	A	12.9	13.3	13.7	14.2	14.6	15	15.5	15.9	16.3
	M	258	302	351	406	467	535	610	695	785
	E	6.5	7	7.6	8.3	9	9.8	10.7	11.6	12.6
	%	65.8	66.9	67.8	68.6	69.2	69.6	69.7	69.4	68.8
50	C	21300	24600	28400	32600	37300	42500	48300	54500	61500
	P	2600	2740	2880	3010	3140	3260	3380	3500	3610
	A	12.6	12.9	13.2	13.4	13.7	14	14.2	14.5	14.8
	M	279	323	373	429	492	565	640	730	825
	E	8.2	9	9.8	10.8	11.9	13	14.3	15.6	17.1
	%	64.1	64.9	65.7	66.2	66.4	66.3	65.7	64.6	62.9
40	C	23000	26500	30400	34900	39900	45500	51500	58500	66000
	P	2500	2610	2720	2830	2930	3020	3110	3200	3280
	A	12.5	12.7	12.9	13.1	13.3	13.5	13.7	13.8	14
	M	288	333	383	440	505	575	655	745	840
	E	9.2	10.1	11.2	12.4	13.6	15.1	16.6	18.3	20
	%	62.2	62.9	63.5	63.8	63.7	63.1	62	60.2	57.6

Nominal Performance Values (±5%) based on 72 hours run-in. Subject to change without notice.

C:Capacity(Btu/hr), P:Power(Watts), A:Current(Amps), M:Mass Flow(lbs/hr), E:EER(Btu/Watt-hr), %:Isentropic Efficiency(%)



RATING CONDITIONS

65 °F Return Gas
 0 °F Subcooling
 95 °F Ambient Air Over

60 Hz Operation

LOW

TEMPERATURE

Use only with Demand Cooling®
 Refer to AE 4-1287

2DL3F20KE-TFC

COPELAMETIC® HFC-407A

DISCUS® COMPRESSOR

TFC 208/230-3-60

Condensing Temperature °F (Sat Dew Pt Pressure, psig)		POE Oil Required. See Form 93-11. Evaporating Temperature °F (Sat Dew Pt Pressure, psig)									
		-40 (-0.9)	-35 (1.1)	-30 (3.3)	-25 (5.8)	-20 (8.6)	-15 (12)	-10 (15)	-5 (19)	0 (23)	
130 (326)	C	5510	6990	8770	10850	13250	15950	19000	22400	26100	
	P	2310	2560	2850	3180	3540	3910	4290	4660	5020	
	A	10.25	10.7	11.25	11.9	12.65	13.45	14.3	15.2	16.05	
	M	86	111	141.5	177	218	264	315	371	431	
	E	2.4	2.75	3.1	3.4	3.75	4.1	4.45	4.8	5.2	
	%	46	51	55.2	58.5	61.1	63.1	64.7	65.8	66.8	
120 (283)	C	6440	8220	10300	12700	15350	18400	21700	25400	29300	
	P	2320	2570	2860	3180	3510	3860	4200	4530	4840	
	A	10.5	10.95	11.45	12.05	12.75	13.45	14.2	14.95	15.7	
	M	96.5	124	156	194	236	283	335	392	453	
	E	2.75	3.2	3.6	4	4.4	4.75	5.15	5.6	6.05	
	%	49.2	53.9	57.7	60.7	63	64.8	66.1	67.2	68.2	
110 (244)	C	7410	9460	11800	14450	17400	20700	24300	28200	32400	
	P	2310	2570	2850	3160	3480	3790	4100	4390	4650	
	A	10.65	11.05	11.55	12.1	12.75	13.35	14	14.65	15.25	
	M	106	135.5	169	208	252	300	352	409	471	
	E	3.2	3.7	4.15	4.6	5	5.45	5.9	6.4	7	
	%	51.6	55.8	59.2	61.9	63.9	65.4	66.6	67.7	68.7	
105 (227)	C	7940	10100	12600	15350	18450	21800	25500	29600	33900	
	P	2300	2560	2840	3140	3450	3760	4050	4310	4540	
	A	10.7	11.1	11.55	12.1	12.7	13.3	13.9	14.45	15	
	M	111	141	175	215	259	307	360	417	479	
	E	3.45	3.95	4.45	4.9	5.35	5.8	6.3	6.85	7.45	
	%	52.6	56.7	59.8	62.2	64	65.5	66.6	67.6	68.6	
100 (210)	C	8500	10800	13400	16250	19450	23000	26800	30900	35400	
	P	2290	2550	2830	3120	3420	3710	3980	4230	4430	
	A	10.7	11.1	11.55	12.1	12.65	13.2	13.75	14.25	14.75	
	M	115.5	146.5	182	221	266	314	367	425	486	
	E	3.7	4.25	4.75	5.2	5.7	6.2	6.7	7.3	8	
	%	53.8	57.5	60.3	62.4	64.1	65.4	66.5	67.4	68.4	
90 (179)	C	9790	12300	15050	18150	21500	25200	29300	33600	38200	
	P	2250	2510	2790	3070	3350	3620	3850	4050	4210	
	A	10.6	11	11.45	11.95	12.45	12.95	13.4	13.85	14.2	
	M	126.5	158	194	235	279	328	381	438	499	
	E	4.35	4.9	5.4	5.9	6.4	7	7.6	8.3	9.1	
	%	56.3	59.1	61.2	62.7	63.9	64.9	65.8	66.6	67.6	
80 (151)	C	11350	14000	16950	20200	23800	27600	31800	36300	41100	
	P	2190	2460	2740	3010	3270	3510	3710	3860	3960	
	A	10.4	10.85	11.3	11.75	12.25	12.65	13.05	13.4	13.65	
	M	139.5	172	208	249	294	342	395	451	511	
	E	5.15	5.7	6.2	6.7	7.25	7.9	8.6	9.4	10.35	
	%	59.7	61.2	62.2	63	63.6	64.1	64.7	65.4	66.3	
70 (127)	C	13200	16000	19100	22500	26200	30200	34500	39100	44000	
	P	2120	2390	2670	2930	3170	3380	3550	3660	3710	
	A	10.15	10.6	11.05	11.5	11.95	12.35	12.65	12.9	13.05	
	M	156	189	225	266	310	358	410	465	524	
	E	6.25	6.7	7.15	7.7	8.25	8.95	9.75	10.7	11.9	
	%	64.1	63.9	63.6	63.4	63.2	63.1	63.3	63.7	64.5	

C:Capacity(Btu/hr), P:Power(Watts), A:Current(Amps), M:Mass Flow(lbs/hr), E:EER(Btu/Watt-hr), %:Isentropic Efficiency(%)

Nominal Performance Values (±5%) based on 72 hours run-in. Subject to change without notice. Current @ 230 V

RATING CONDITIONS

65 °F Return Gas
 0 °F Subcooling
 95 °F Ambient Air Over

60 Hz Operation

**LOW
 TEMPERATURE**

2DL3F20K0-TFC

COPELAMETIC® HCFC-502
 DISCUS® COMPRESSOR
 TFC 208/230-3-60

Condensing Temperature °F

(Sat Dew Pt Pressure, psig)

Evaporating Temperature °F (Sat Dew Pt Pressure, psig)

	130 (321)	-40 (4.1)	-35 (6.5)	-30 (9.2)	-25 (12)	-20 (15)	-15 (19)	-10 (23)	-5 (27)	0 (31)
C	7690	9930	12200	14600	17200	19800	22700	25800	29200	
P	2570	2970	3350	3720	4070	4400	4730	5050	5350	
A	10.9	11.6	12.4	13.1	13.8	14.5	15.3	16.1	16.9	
M	183	235	289	347	408	473	545	620	705	
E	3	3.3	3.6	3.9	4.2	4.5	4.8	5.1	5.5	
%	61.8	65.1	67.3	68.7	69.8	70.6	71.3	71.8	72.2	
120 C	9550	11800	14200	16700	19300	22200	25300	28700	32400	
(283) P	2720	3070	3410	3730	4040	4330	4620	4900	5150	
A	11.3	12	12.7	13.3	14	14.6	15.3	16	16.7	
M	208	258	310	366	427	492	565	640	725	
E	3.5	3.8	4.2	4.5	4.8	5.1	5.5	5.9	6.3	
%	63.5	65.9	67.6	68.8	69.8	70.5	71.2	71.7	72	
110 C	11300	13500	16000	18600	21500	24600	28000	31700	35700	
(248) P	2810	3110	3410	3690	3960	4220	4470	4720	4960	
A	11.4	12.1	12.7	13.2	13.8	14.4	15	15.7	16.3	
M	229	277	328	383	444	510	580	660	745	
E	4	4.3	4.7	5	5.4	5.8	6.3	6.7	7.2	
%	64.5	66.3	67.7	68.8	69.7	70.5	71.2	71.7	72	
100 C	12800	15200	17700	20500	23600	26900	30600	34700	39200	
(216) P	2840	3100	3350	3600	3830	4060	4290	4510	4730	
A	11.4	12	12.5	13	13.5	14	14.5	15.1	15.7	
M	247	293	343	398	459	525	600	680	770	
E	4.5	4.9	5.3	5.7	6.2	6.6	7.1	7.7	8.3	
%	65.1	66.6	67.8	68.9	69.8	70.6	71.2	71.7	71.9	
90 C	14400	16800	19500	22500	25800	29400	33400	37900	42700	
(187) P	2820	3040	3260	3470	3670	3870	4070	4270	4470	
A	11.3	11.8	12.2	12.6	13.1	13.5	14	14.5	15	
M	262	307	357	412	473	540	615	700	795	
E	5.1	5.5	6	6.5	7	7.6	8.2	8.9	9.6	
%	65.5	66.8	68	69	69.9	70.7	71.3	71.6	71.7	
80 C	15800	18400	21300	24500	28000	32000	36300	41200	46500	
(161) P	2750	2940	3130	3310	3480	3660	3840	4010	4190	
A	11.2	11.6	11.9	12.3	12.6	13	13.4	13.8	14.3	
M	274	319	369	425	488	560	635	720	820	
E	5.8	6.3	6.8	7.4	8	8.7	9.5	10.3	11.1	
%	65.8	67.1	68.3	69.3	70.2	70.9	71.3	71.5	71.3	
70 C	17300	20100	23100	26500	30400	34700	39500	44700	50500	
(138) P	2650	2810	2960	3120	3270	3420	3580	3740	3910	
A	11.2	11.5	11.7	12	12.3	12.6	12.9	13.2	13.6	
M	285	331	381	439	505	575	655	745	845	
E	6.6	7.1	7.8	8.5	9.3	10.1	11	12	12.9	
%	66.3	67.6	68.7	69.7	70.5	71.1	71.3	71.1	70.4	

Nominal Performance Values (±5%) based on 72 hours run-in. Subject to change without notice.

C:Capacity(Btu/hr), P:Power(Watts), A:Current(Amps), M:Mass Flow(lbs/hr), E:EER(Btu/Watt-hr), %:Isentropic Efficiency(%)



RATING CONDITIONS

65 °F Return Gas
 0 °F Subcooling
 95 °F Ambient Air Over

60 Hz Operation

LOW

TEMPERATURE

HFCs Require Use of Polyol Ester
 Lubricant Approved by Copeland
 Corp. Bulletin AE-1248

2DL3F20KE-TFC

COPELAMETIC® HFC-507

DISCUS® COMPRESSOR

TFC 208/230-3-60

Condensing Temperature °F

(Sat Dew Pt Pressure, psig)

Evaporating Temperature °F (Sat Dew Pt Pressure, psig)

	130 (364)	-40 (5.7)	-35 (8.4)	-30 (11)	-25 (15)	-20 (18)	-15 (22)	-10 (26)	-5 (30)	0 (35)
130	C	7630	9750	12000	14400	17000	19800	22900	26200	29800
	P	2710	3120	3520	3910	4300	4680	5050	5400	5800
	A	12.8	13.7	14.6	15.6	16.5	17.5	18.5	19.5	20.5
	M	176	224	275	332	393	460	535	615	705
	E	2.8	3.1	3.4	3.7	4	4.2	4.5	4.8	5.2
	%	62.7	65.7	67.8	69.4	70.7	71.8	72.7	73.4	73.9
120	C	9500	11800	14200	16900	19700	22900	26300	30000	34000
(320)	P	2830	3210	3580	3940	4290	4640	4980	5300	5650
	A	13.1	13.9	14.8	15.6	16.5	17.4	18.2	19.1	20.1
	M	196	244	295	352	413	481	555	635	725
	E	3.4	3.7	4	4.3	4.6	4.9	5.3	5.6	6
	%	64	66.4	68.2	69.6	70.7	71.7	72.4	73.1	73.5
110	C	11300	13800	16400	19300	22400	25900	29600	33700	38200
(279)	P	2910	3250	3580	3910	4230	4540	4850	5150	5450
	A	13.3	14	14.8	15.5	16.3	17.1	17.9	18.7	19.5
	M	215	262	313	370	432	500	575	660	750
	E	3.9	4.2	4.6	4.9	5.3	5.7	6.1	6.6	7
	%	64.9	66.9	68.4	69.7	70.7	71.6	72.3	72.8	73.2
105	C	12200	14800	17500	20500	23800	27400	31300	35600	40300
(261)	P	2930	3250	3570	3880	4180	4480	4770	5050	5350
	A	13.3	14	14.7	15.5	16.2	16.9	17.7	18.5	19.2
	M	223	270	322	378	440	510	585	670	760
	E	4.2	4.5	4.9	5.3	5.7	6.1	6.6	7.1	7.6
	%	65.3	67.1	68.6	69.8	70.7	71.5	72.2	72.7	72.9
100	C	13100	15700	18600	21700	25100	28900	33000	37500	42400
(243)	P	2940	3250	3550	3840	4130	4410	4680	4950	5200
	A	13.3	14	14.7	15.4	16.1	16.8	17.5	18.2	18.9
	M	232	278	330	386	449	520	595	680	770
	E	4.5	4.8	5.2	5.6	6.1	6.6	7.1	7.6	8.1
	%	65.6	67.3	68.7	69.8	70.7	71.5	72.1	72.5	72.7
80	C	16700	19600	22800	26400	30400	34800	39700	45000	51000
(180)	P	2890	3130	3370	3600	3820	4030	4250	4450	4650
	A	13.2	13.8	14.3	14.8	15.3	15.8	16.4	16.9	17.5
	M	260	307	358	416	479	550	630	715	810
	E	5.8	6.3	6.8	7.4	8	8.6	9.3	10.1	10.9
	%	66.3	67.6	68.7	69.6	70.3	70.8	71.1	71.2	71
70	C	18400	21500	25000	28800	33100	37800	43000	48800	55000
(154)	P	2830	3040	3240	3440	3630	3810	3990	4170	4340
	A	13.1	13.6	14	14.4	14.9	15.3	15.8	16.2	16.7
	M	272	319	371	429	493	565	645	730	830
	E	6.5	7.1	7.7	8.4	9.1	9.9	10.8	11.7	12.7
	%	66.1	67.3	68.3	69.1	69.7	70	70.1	69.9	69.4
50	C	21900	25300	29200	33600	38400	43800	49800	56500	63500
(109)	P	2650	2800	2940	3070	3200	3330	3450	3570	3680
	A	12.9	13.2	13.4	13.7	14	14.3	14.5	14.8	15.1
	M	293	340	393	452	520	590	675	765	865
	E	8.3	9.1	9.9	10.9	12	13.2	14.4	15.8	17.3
	%	64.2	65.2	66	66.5	66.7	66.6	66	64.9	63.2
40	C	23700	27300	31300	36000	41100	46800	53000	60000	67500
(90)	P	2550	2670	2780	2880	2980	3080	3170	3260	3350
	A	12.8	13	13.2	13.4	13.6	13.7	13.9	14.1	14.3
	M	302	349	403	463	530	605	690	780	885
	E	9.3	10.2	11.3	12.5	13.8	15.2	16.8	18.4	20.2
	%	62.1	63.1	63.7	64	63.8	63.3	62.1	60.3	57.8

Nominal Performance Values (±5%) based on 72 hours run-in. Subject to change without notice.

C:Capacity(Btu/hr), P:Power(Watts), A:Current(Amps), M:Mass Flow(lbs/hr), E:EER(Btu/Watt-hr), %:Isentropic Efficiency(%)



2DL3F20KE-TFC

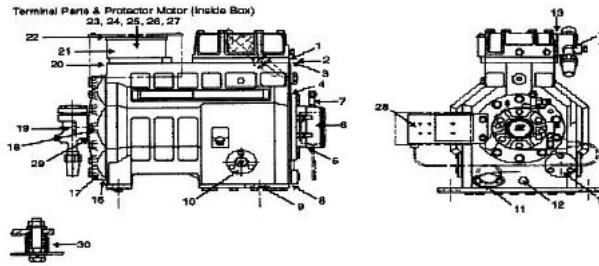


HFC , R-407A, Mid Point, 60 Hz, 3 - Phase, 208/230 V

Low Temperature

Production Status: Available for sale to all U.S. customers. Please check with your local Emerson Climate Technologies representative for international availability.

Service Parts



Reference	Component	Quantity	Description	Comments
53	003-0020-02	1	PLATE-MUFFLER	
9	003-0099-00	1	PLATE-BOTTOM	
22	005-0163-00	1	COVER-TERMINAL BOX	
17	005-0650-03	1	COVER-STATOR	
18	020-0012-09	1	GASKET-SERVICE VALVE	2880908 SUCTION
13	020-0012-11	1	GASKET-SERVICE VALVE	DISCHARGE
52	020-0012-11	2	GASKET-SERVICE VALVE	GASKET REQUIRED ON BOTH SIDES OF MUFFLER PLAT
4	020-0104-00	1	GASKET-HOUSING COVER	
20	020-0146-00	1	GASKET-TERM MTG PLATE	
8	020-0159-00	1	GASKET-BOTTOM PLATE	
44	020-0297-13	1	GASKET-SENTRONIC SENSOR	
43	020-0678-00	1	GASKET-CLOSURE PLATE	
16	020-0709-00	1	GASKET-STATOR COVER	
5	020-0732-00	1	GASKET-OIL PUMP	2942708
1	020-0756-00	1	GASKET-CYLINDER HEAD	
3	020-0757-02	1	GASKET-VALVE PLATE	
25	020-0844-02	1	SEAL	FOR T CLUSTER 521-0018-00
45	020-0844-04	1	SEAL-SIGHT GLASS	2042028
42	030-0187-00	1	SLEEVE-HEATER	REQUIRED WHEN USING CCH
21	062-0058-00	1	BOX-TERMINAL	
34	510-0142-00	1	VALVE-OIL CHECK ASSM	2852661
7	510-0191-00	1	VALVE-SCHRADER TEE	INSTALLED IN OIL PUMP
24	521-0018-00	1	TERMINAL-FUSED CLUSTER	
30	527-0105-00	1	SPACER-MOUNTING ASSM	
46	585-1066-02	1	CONTROL-OIL PROTECT GP	
54	910-0352-00	1	DEMAND COOL VLV & COIL	COIL VOLTAGE 120V/50/60HZ
54	910-0352-01	1	DEMAND COOL VLV & COIL	COIL VOLTAGE 240V/50/60HZ
12	918-0028-00	1	HEATER-CC--100W/120V	WELD
12	918-0028-01	1	HEATER-CC--100W/240V	WELD
51	921-0227-00	1	CONNECTOR BLOCK KIT	
10	998-0002-02	1	SIGHT GLASS KIT	
6	998-0008-33	1	OIL PUMP KIT	WITH OIL PUMPBOLTS& GASKETS& ADAPTER RING
47	998-0162-00	1	SENTRONIC SENSOR KIT	
48	998-0283-02	1	KIT-CABLE	
27	998-0429-08	1	PROTECTOR & GASKET KIT	
19	998-0510-11	1	SERV VALVE KIT 1 3/8 SWT	1 3/8 SWT2 BOLTSUCTION
14	998-0510-12	1	SERV VALVE KIT 7/8 SWT	7/8 SWT2 BOLTDISCHARGE

David, Downen.
12/22/2008

<u>Reference</u>	<u>Component</u>	<u>Quantity</u>	<u>Description</u>	<u>Comments</u>
11	998-0513-03	1	OIL SCREEN KIT	
50	998-0513-04	1	SUCTION SCREEN KIT	
28	998-0700-07	1	OIL CONTROL BRKT KIT	
38	998-1000-12	1	DEMAND COOL KIT	120V/50/60 HZ
49	998-1000-22	1	DEMAND COOLING KIT	240V 50/60 HZ
38	998-1001-13	1	DEMAND COOL 120V/50 HZ	
49	998-1001-23	1	DEMAND COOL 240V/ 50 HZ	
2	998-1661-29	1	VALVE PLATE KIT	
36	998-1669-06	1	GASKET SET	
15	998-5100-00	1	SUCT & DISCH VALVE KIT	WITH VALVESBOLTS& GASKETS

2DL3F20KE-TFC

HFC, R-404A, Mid Point, 60 Hz, 3 - Phase, 208/230 V

Low Temp, Low Condensing



Production Status: Available for sale to all U.S. customers. Please check with your local Emerson Climate Technologies Representative for international availability.

Accessories

<u>PartNumber</u>	<u>Description</u>
006-0200-00	Spring. Internal, between the valve plate, & unloader piston. (Unloader Spring)
020-1004-00	Cover plate gasket 003-0021-00. When replacing standard model 9RC or 9RS with unloading added, replace with unloader models 9RP or 9RT.
023-0039-01	Coil, 120v, Alco - Demand cooling valve (Unloader Valve)
023-0039-02	Coil, 240v, Alco - Demand cooling valve (Unloader Valve)
023-0042-01	Solenoid Coil 120v, 50/60 Hz, Parker - Demand cooling valve
023-0042-02	Solenoid Coil 240v, 50/60 Hz, Parker - Demand cooling valve
024-0200-00	Fan Guard - Top, for Head Cooling Fan
030-0187-00	Heater Sleeve, well style - Order well separately
083-0118-00	Fan Blade - for Head Cooling Fan
085-0109-00	Temperature Probe-Standard 41" - Demand Cooling
085-0109-01	Temperature Probe-10 ft cable - Demand Cooling
085-0110-00	Control Module 120v 50/60 Hz - Demand Cooling
085-0110-01	Control Module 240v 50/60 Hz - Demand Cooling
085-0160-00	3 Phase Voltage Monitor. For use with all Copeland 3 Phase Compressors. Consult model family nomenclature for electrical definition in the model number.
510-0351-00	Demand Cooling Valve 50/60 Hz Alco
510-0352-00	Demand Cooling Valve & Coil, 120v, 50/60 Hz, Alco
510-0352-01	Demand Cooling Valve & Coil, 240v, 50/60 Hz Alco
585-1066-02	Sentronic Oil Pressure Control - Kit includes Sentronic oil pressure control, screws to mount control, oil pressure sensor, and sensor gaskets. Control mounting brackets are supplied on service replacement compressors.
918-0009-00	Crankcase Heater, 120v, 65w, bolt on. For usage on specific Copeland Copelametic & Discus Compressor except deep sump models. Includes crankcase heater, and reference drawings.
918-0009-01	Crankcase Heater, 240v, 65w, bolt on. For usage on specific Copeland Copelametic, & Discus Compressor except deep sump models. Includes crankcase heater, and reference drawings.
918-0009-02	Crankcase Heater, 480v, 65w, bolt on. For usage on specific Copeland Copelametic, & Discus Compressor except deep sump models. Includes crankcase heater, and reference drawings.
918-0009-03	Crankcase Heater, 600v, 65w, bolt on. For usage on specific Copeland Copelametic, & Discus Compressor except deep sump models. Includes crankcase heater, and reference drawings.
918-0028-00	Crankcase Heater 120v, 100w insertion. For usage on specific Copeland Copelametic, & Discus Compressors. Use with Heater Well 030-0186-00 and 030-0187-00.
918-0028-01	Crankcase Heater 240v, 100w insertion. For usage on specific Copeland Copelametic, & Discus Compressors. Use with Heater Well 030-0186-00 and 030-0187-00.
998-0045-00	End plate kit. Kit includes end plate & end plate gasket for the unloader valve.
998-0161-01	Sentronic Oil Control - Control only, supplied with 44" cable as standard
998-0162-00	Kit includes sensor, gaskets, and cable.
998-0283-02	Standard Sentronic cable is 44" long. The extension cable is 12 ft long and must be wired into the control. Kit 998-0283-02 includes instructions.
998-0550-00	Fan Motor Blade & Guard Assembly 230v, Does not include mounting bracket. Must be ordered separately
998-0550-01	Fan Motor Blade & Guard Assembly 460v, Does not include mounting bracket. Must be ordered separately
998-0550-02	Fan Motor Blade & Guard Assembly 115v, Does not include mounting bracket. Must be ordered separately
998-0550-03	Fan Motor 230v. Includes fan motor mounted to bottom guard
998-0550-04	Fan Motor 460v. Includes fan motor mounted to bottom guard
998-0550-05	Fan Motor 115v. Includes fan motor mounted to bottom guard
998-0574-11	Fan Mounting Kit. Vertical fan mount on top of compressor head
998-0683-00	Shipping Plate, Gasket, and Bolt (Discharge all 2D) (Discharge) (Suction & Discharge) 2 kits required

2DL3F20KE-TFC

HFC, R-404A, Mid Point, 60 Hz, 3 - Phase, 208/230 V

Low Temp, Low Condensing



Production Status: Available for sale to all U.S. customers. Please check with your local Emerson Climate Technologies Representative for international availability.

Accessories

<u>PartNumber</u>	<u>Description</u>
998-0683-01	Shipping Plate, Gasket, and Bolt (Suction all 2) (Discharge all 3D, 4D, 4R, 6D, 6R & 9R) (Suction) (Suction 5, 6, 7 1/2, 9, & 10 12 HP)
998-0683-02	Shipping Plate, Gasket, and Bolt (Suction 6R, 10, 15 & 20 HP)
998-0700-09	Control Mounting Bracket Kit
998-1000-12	Demand Cooling Kit 120v / 60Hz
998-1000-22	Demand Cooling Kit 240v / 60Hz
998-1001-12	Demand Cooling Kit 120v / 50Hz
998-1001-22	Demand Cooling Kit 240v / 50Hz
998-AB52-01	Akybenzene Oil. Approved for use with specific Copeland Semi Hermetic After Market Compressors. Consult model family nomenclatures for oil identifier in the model number.
998-E022-01	Polyol Ester Oil. Approved for use with specific Copeland Hermetic & Semi Hermetic models. Consult specific model family nomenclatures for oil identifier in the model number.

2DL3F20KE-TFC



HFC, R-404A, Mid Point, 60 Hz, 3 - Phase, 208/230 V

Low Temp, Low Condensing

Production Status: Available for sale to all U.S. customers. Please check with your local Emerson Climate Technologies Representative for international availability.

Electrical Components

Stator

Resistance:	+/-7%	Line to Line:	0.419	Line To Wye:	0.0
-------------	-------	---------------	-------	--------------	-----

Internal Protector

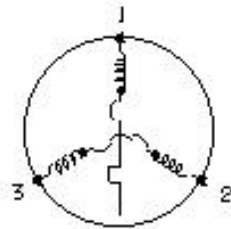
Part No. 071-0429-08

Usage Description:

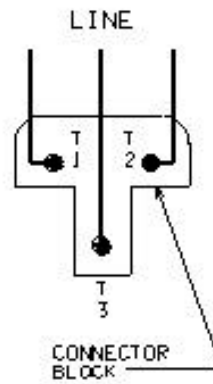
Vendor Name

T I

USE COPPER CONDUCTORS ONLY
USE THIS EQUIPMENT ON A GROUNDING SYSTEM ONLY.
USE MINIMUM 75 C WIRE FOR AMPACITY DETERMINATION.
PRIMARY SINGLE PHASE FAILURE PROTECTION IS PROVIDED.
INTERNAL MOTOR PROTECTION-ALLOW TIME FOR RESET
CRANKCASE HEATER, WHEN APPLIED, MUST BE CONNECTED ONLY
TO ITS RATED VOLTAGE
OVERCURRENT PROTECTION DEVICE RATING AND TYPE MUST BE IN
ACCORDANCE WITH REGULATORY AGENCY END PRODUCT APPROVALS-
SEE SYSTEM NAMEPLATE



MOTOR WINDING CONNECTIONS

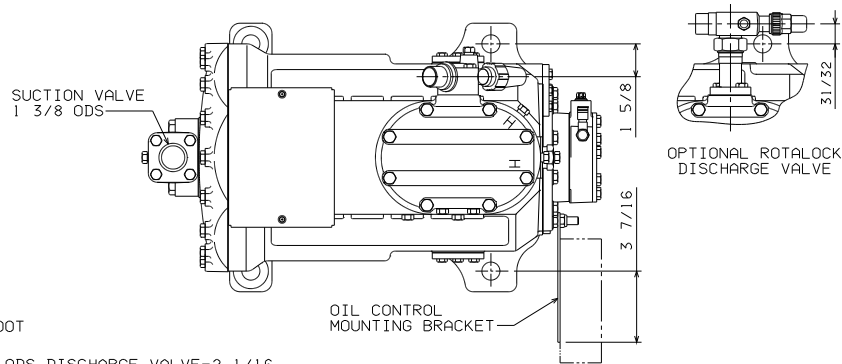


9-93 052-0803-00

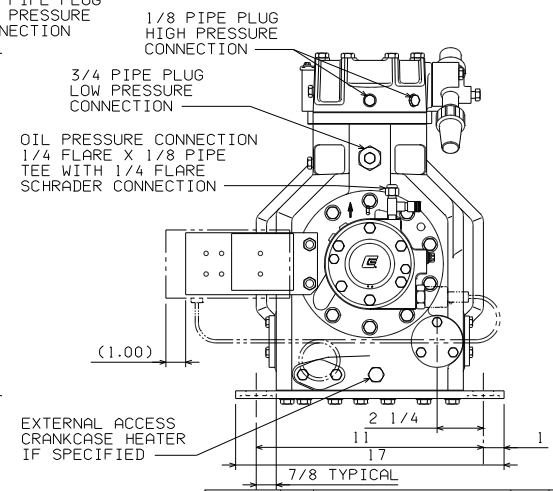
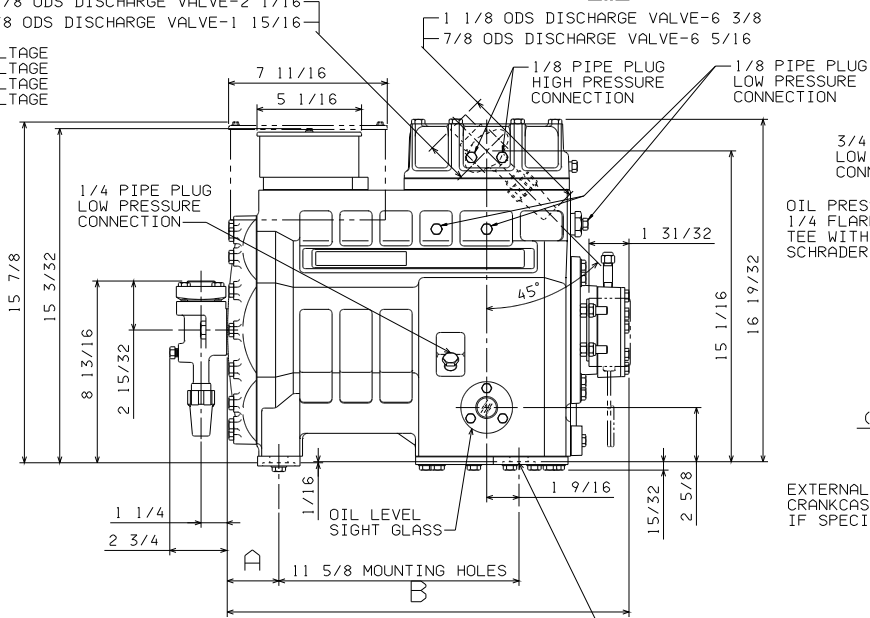
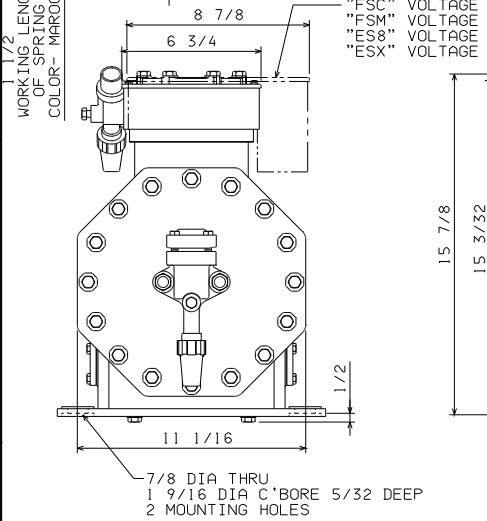
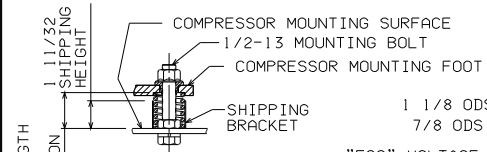
Wiring Diagram 052-0803-00

MODEL	A	B	OLD MODEL NUMBER
2DA3R58K	2 1/2	19 1/2	2DA3-050
2DA3F23K	3 1/2	20 1/2	2DA3-060
2DA3R89K	3 1/2	20 1/2	2DA3-075
2DB3R61K	2 1/2	19 1/2	2DB3-050
2DB3F25K	3 1/2	20 1/2	2DB3-060
2DC3R53K	3 1/2	20 1/2	2DC3-050
2DCJR53K	3 1/2	20 1/2	2DCJ-050
2DF3F16K	3 1/2	20 1/2	2DF3-030
2DD3R63K	3 1/2	20 1/2	2DD3-050
2DL3F20K	3 1/2	20 1/2	2DL3-040
2DL3R78K	3 1/2	20 1/2	2DL3-075

SPECIFICATIONS	
ES NO.	DESCRIPTION
ES81-159	CLEANLINESS
ES81-250	IDENTIFICATION
ES92-155	CONVERSION-METRIC
ES92-167	HAZARDOUS SUBSTANCES



NOTE:
 △ ALL TOLERANCES ARE ±3/32 EXCEPT INDUSTRY STANDARDS APPLY TO FITTINGS AND VALVES.



INTERPRET PER ASME Y14.5M-1974 AND COPELAND DESIGN STANDARDS DS2002. DO NOT SCALE DRAWING.
 THIRD ANGLE PROJECTION
 UNLESS OTHERWISE SPECIFIED DIMENSIONS ARE INCH (MILLIMETER).
 2 PLACE 1
 3 PLACE 1
 ANGULAR 1

ENG NOTICE NO.	REV NO.	RELEASE	REVISIONS	DATE	BY	CHKD	APPR
51-0805-048	28	REDRAWN: CHART UPDATED		09-28-05	SKR	DE	
51-0289-036		RELEASE		01-19-88	EG		

CONFIDENTIALITY NOTE			
THIS DRAWING AND THE INFORMATION CONTAINED HEREIN ARE THE EXCLUSIVE PROPERTY OF COPELAND. IT SHALL BE RETURNED TO COPELAND UPON DEMAND AND SHALL NOT BE REPRODUCED IN WHOLE OR IN PART, DISCLOSED TO ANYONE ELSE OR USED WITHOUT THE WRITTEN CONSENT OF COPELAND.			
MATERIAL SPECIFICATION	SKR	497-0184-00/27	REV. NO.
N/A	DATE	09-12-05	SCALE
	DATE FORMAT:	MM-DD-YY	
TITLE	DRAWING NUMBER	497-0184-00	SHEET 1 OF 1
REF DWG-COPE COMP ASSM			4

UNCONTROLLED - DO NOT MODIFY
 COPELAND CORP. - CONFIDENTIAL