



**60-700/800 Series – 316 Stainless Steel Globe Bar stock Valves**



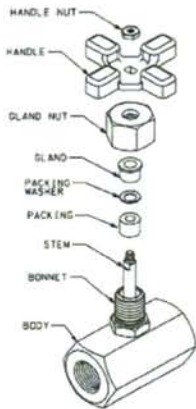
**Sizes:** 1/8" through 1"

**Features**

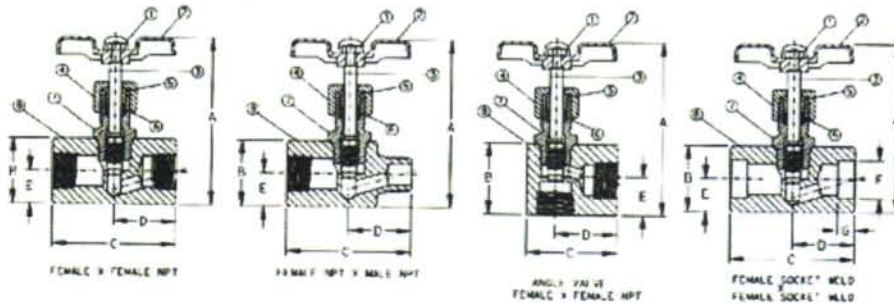
- PTFE packing is standard material. PTFE packing is recommended for high pressure air and gas applications.
- Malleable iron handles for long lasting reliable service.
- Designed to backseat when fully opened. Backseating the valve helps take the pressure off the packing, thereby prolonging the packing life. The backseat also prevents the stem from being accidentally turned out of the valve.
- Fully threaded bonnet to accommodate optional panel mounting nut.
- Integral metal to metal seat and disc design.
- Every valve is seat tested at 300 psig air.
- Excellent Cv values.
- Lock bonnet option available.
- Body material for socket weld valves is ASTM A276 Gr. 316 S.S.
- ASTM materials used in construction of all pressure retaining parts.
- Meets the requirements of Nace MR-01-75

**MATERIAL LIST:**

- |              |  |
|--------------|--|
| 1. Locknut   | Steel, zinc plated                             |
| 2. Handle    | ASTM A47 Malleable Iron, Zinc Phosphate finish |
| 3. Stem      | ASTM A276 Gr. 316 S.S., Zinc Phosphate finish  |
| 4. Gland Nut | ASTM A276 Gr. 316 S.S.                         |
| 5. Gland     | ASTM B525 Gr. II, Type I                       |
| 6. Packing   | P.T.F.E.                                       |
| 7. Bonnet    | ASTM A276 Gr. 316 S.S.                         |
| 8. Body      | ASTM A276 Gr. 316 S.S.                         |



## Dimensions



Part No.	Size in./mm	A in./mm	B in./mm	C in./mm	D in./mm	E in./mm	CV	WT/100 lbs/kg
60-700	1/8 4	3.430 87.122	1.120 28.448	1.750 44.450	0.880 22.352	0.560 14.224	0.430	123.000 55.792
60-701	1/4 8	3.810 96.774	1.370 34.798	2.250 57.150	1.120 28.448	0.680 17.272	0.430	123.000 55.792
60-702	3/8 10	3.810 96.774	1.370 34.798	2.250 57.150	1.120 28.448	0.680 17.272	0.740	119.000 53.977
60-703	1/2 15	3.810 96.774	1.500 38.100	2.750 69.850	1.370 34.798	0.750 19.050	1.360	164.000 74.389
60-704	3/4 20	5.430 137.922	1.930 49.022	3.180 80.772	1.590 40.386	0.960 24.384	2.640	334.000 151.500
60-705	1 25	6.000 152.400	2.120 53.848	3.620 91.948	1.810 45.974	1.060 26.924	3.600	465.000 210.920

## Connection: Male X Female

Part No.	Size in./mm	A in./mm	B in./mm	C in./mm	D in./mm	E in./mm	CV	WT/100 lbs/kg
60-711	1/4 8	3.810 96.774	1.370 34.798	2.250 57.150	1.120 28.448	0.680 17.272	0.430	123.000 55.792
60-712	3/8 10	3.810 96.774	1.370 34.798	2.250 57.150	1.120 28.448	0.680 17.272	0.740	119.000 53.977
60-713	1/2 15	3.810 96.774	1.500 38.100	2.750 69.850	1.370 34.798	0.750 19.050	1.360	164.000 74.389

## Connection: Socket Weld

Part No.	Size in./mm	A in./mm	B in./mm	C in./mm	D in./mm	E in./mm	F in./mm	G in./mm	CV	WT/100 lbs/kg
60-720	1/8 4	3.430 87.122	1.120 28.448	1.750 44.450	0.880 22.352	0.560 14.224	0.424 10.770	0.370 9.398	0.430	123.000 55.792
60-721	1/4 8	3.810 96.774	1.370 34.798	2.250 57.150	1.120 28.448	0.680 17.272	0.559 14.199	0.370 9.398	0.430	123.000 55.792
60-722	3/8 10	3.810 96.774	1.370 34.798	2.250 57.150	1.120 28.448	0.680 17.272	0.694 17.628	0.370 9.398	0.740	119.000 53.977
60-723	1/2 15	3.810 96.774	1.500 38.100	2.750 69.850	1.370 34.798	0.750 19.050	0.859 21.819	0.370 9.398	1.360	164.000 74.389
60-724	3/4 20	5.430 137.922	1.930 49.022	3.180 80.772	1.590 40.386	0.960 24.384	1.069 27.153	0.500 12.700	2.640	334.000 151.500
60-725	1 25	6.000 152.400	2.120 53.848	3.620 91.948	1.810 45.974	1.060 26.924	1.334 33.884	0.500 12.700	3.600	465.000 210.920

## Connection: Angle Valves

Part No.	Size in./mm	Size in./mm	A in./mm	B in./mm	C in./mm	D in./mm	E in./mm	CV	WT/100 lbs/kg
60-800	1/8	1/8	3.180	1.120	1.250	0.810	0.500	0.390	60.000
	4	4	80.772	28.448	31.750	20.574	12.700		27.216
60-801	1/4	1/4	3.310	1.500	1.590	1.030	0.620	0.430	80.000
	8	8	84.074	38.100	40.386	26.162	15.748		36.287
60-802	3/8	3/8	3.310	1.500	1.590	1.063	0.620	0.840	90.000
	10	10	84.074	38.100	40.386	26.988	15.748		40.823
60-803	1/2	1/2	3.310	1.620	2.000	1.370	0.750	1.360	120.000
	15	15	84.074	41.148	50.800	34.798	19.050		54.431
60-804	3/4	3/4	4.500	2.000	2.500	1.620	1.000	2.640	320.000
	20	20	114.300	50.800	63.500	41.148	25.400		145.150
60-805	1	1	5.063	2.250	2.930	1.930	1.250	3.900	500.000
	25	25	128.588	57.150	74.422	49.022	31.750		226.796

## Options

(SUFFIX)	OPTION	SIZES
-01-	STANDARD	-
-02-	PANEL MOUNT	-
-03-	LOCK BONNET	-
-06-	GRAFOIL PACKING	-



## 316 STAINLESS STEEL GLOBE & ANGLE VALVES

1/8" THROUGH 1"

10,000 PSIG @ 100° F., WOG

316 stainless steel globe and angle valves with the standard option are excellent for sub-zero temperatures to -50°F. This valve offers the greatest overall corrosion resistance and can be used in acidic solutions.

### MATERIAL LIST:

1. Locknut Steel, zinc plated
2. Handle ASTM A47 Malleable Iron, Melonite treated
3. Stem ASTM A276 Gr. 316 S.S., Melonite treated
4. Gland Nut ASTM A276 Gr. 316 S.S.
5. Gland ASTM B525 Gr. II, Type I
6. Packing P.T.F.E
7. Bonnet ASTM A276 Gr. 316 S.S.
8. Body ASTM A276 Gr. 316 S.S.



### Pressure & Temperature Ratings

Stainless Steel Needle Valve

