

ENGINEERING  
TOMORROW

*Danfoss*

Datasheets

# Danfoss scroll compressors **H series**



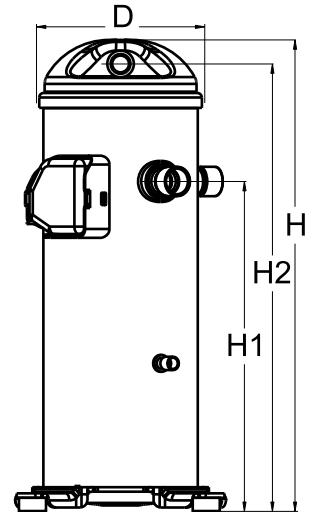
FRCC.UD.170306.221828

[www.danfoss.com/odsg](http://www.danfoss.com/odsg)

**General Characteristics**

Model number (on compressor nameplate)		<b>HCP094T2LC6</b>
Code number for Singlepack*		120U0906
Code number for Industrial pack**		120U0903
Drawing number		0SR4103B-3
Suction and discharge connections		Brazed
Suction connection		1-1/8" ODF
Discharge connection		7/8" ODF
Oil sight glass		None
Oil equalization connection		None
Oil drain connection		None
LP gauge port		None
IPR valve		None
Swept volume		7.69 in <sup>3</sup> /rev
Displacement @ Nominal speed		774 cfh @ 2900 rpm - 935 cfh @ 3500 rpm
Net weight		97 lbs
Oil charge		90 oz, PVE - -
Maximum system test pressure Low Side / High side		- psi / - psi
Maximum differential test pressure		- psi
Maximum number of starts per hour		-
Refrigerant charge limit		16 lbs
Approved refrigerants		R407C

**Dimensions**

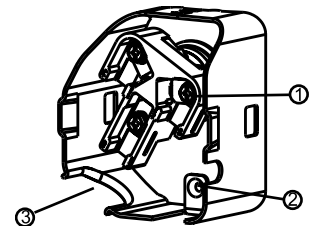


D=7.2 inch, H=21.1 inch,  
H1=14.5 inch, H2=20 inch, H3=- inch

**Electrical Characteristics**

Nominal voltage	208-230V/3/60Hz
Voltage range	188-253 V
Winding resistance between phases 1-2 +/- 7% at 77°F	0.370 Ω
Winding resistance between phases 1-3 +/- 7% at 77°F	0.370 Ω
Winding resistance between phases 2-3 +/- 7% at 77°F	0.370 Ω
Rated Load Amps (RLA)	25.6 A
Maximum Continuous Current (MCC)	40 A
Locked Rotor Amps (LRA)	190 A
Motor protection	Internal overload protector

**Terminal box**



IP22

- 1: Screw connectors 10-32 UNF x 9.5
- 2: Earth connection
- 3: Power cable passage

**Recommended Installation torques**

Oil sight glass	39 ft.lbs
Power connections / Earth connection	2 ft.lbs / 1 ft.lbs

**Parts shipped with compressor**

Mounting kit with grommets and sleeves
Initial oil charge
Installation instructions

**Approvals** : CE certified, UL certified (file SA11565), -

\*Singlepack: Compressor in cardboard box

\*\*Industrial pack: 12 or 16 Unboxed compressors on pallet

<b>Rotolock accessories, suction side</b>	<b>Code no.</b>
Solder sleeve, P02 (1-3/4" Rotolock, 1-1/8" ODF)	8153004
Angle adapter, C02 (1-3/4" Rotolock, 1-1/8" ODF)	8168005
Rotolock valve, V02 (1-3/4" Rotolock, 1-1/8" ODF)	8168028
Gasket, 1-3/4"	8156132

<b>Rotolock accessories, discharge side</b>	<b>Code no.</b>
Rotolock valve, V05 (1-1/4" Rotolock, 7/8" ODF)	8168030
Gasket, 1-3/4"	8156132

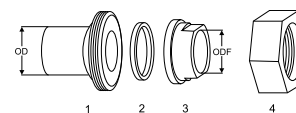
<b>Rotolock accessories, sets</b>	<b>Code no.</b>
Solder sleeve adapter set, 1-1/8" ODF & 7/8" ODF	120Z0125
Valve set, V02(1"3/4~1"1/8), V05(1"1/4~7/8")	120Z0403
Gasket set, 1", 1-1/4", 1-3/4", OSG gaskets black & white	8156009

<b>Oil / lubricants</b>	<b>Code no.</b>
PVE lubricant, 320HV (FVC68D), 1 litre can	120Z5034

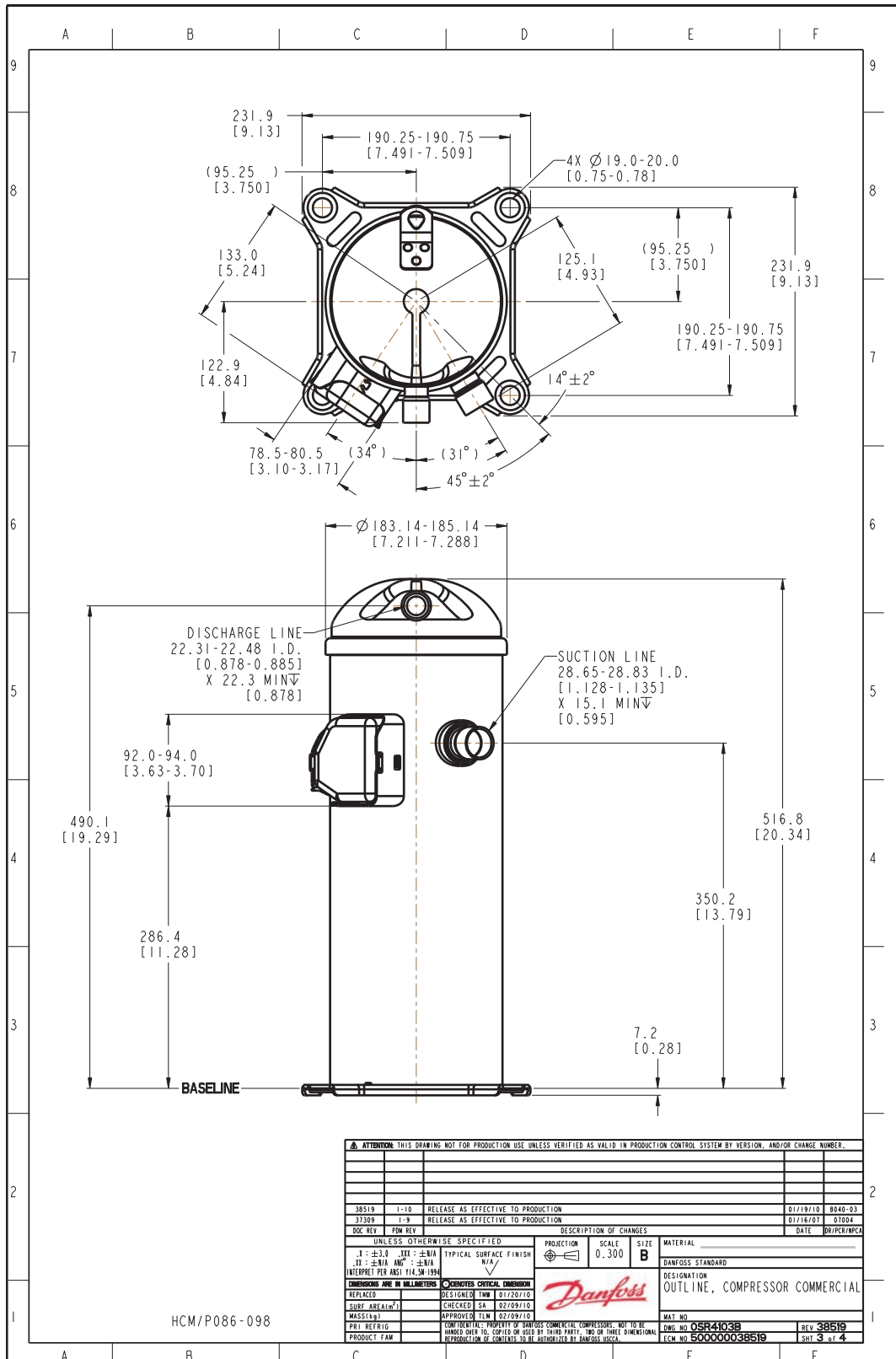
<b>Crankcase heaters</b>	<b>Code no.</b>
Belt type crankcase heater, 65 W, 230 V, CE mark, UL	120Z0059
Belt type crankcase heater, 70 W, 240 V, CE mark, UL	120Z5040

<b>Miscellaneous accessories</b>	<b>Code no.</b>
Acoustic hood	120Z5045
Discharge thermostat kit	7750009

<b>Spare parts</b>	<b>Code no.</b>
Mounting kit for 1 scroll compressor including 4 grommets, 4 sleeves, 4 bolts, 4 washers	120Z5005
Mounting kit for 1 scroll compressor including 4 grommets, 4 sleeves, 4 bolts, 4 washers	120Z5031

**Solder sleeve adapter set**


- 1: Rotolock adapter (Suc & Dis)
- 2: Gasket (Suc & Dis)
- 3: Solder sleeve (Suc & Dis)
- 4: Rotolock nut (Suc & Dis)



**ATTENTION:** THIS DRAWING NOT FOR PRODUCTION USE, UNLESS VERIFIED AS VALID IN PRODUCTION CONTROL SYSTEM BY VERSION, AND/OR CHANGE NUMBER.

38519	1-10	RELEASE AS EFFECTIVE TO PRODUCTION	01/19/10	8040-93
33309	1-5	RELEASE AS EFFECTIVE TO PRODUCTION	01/16/07	07004
DOC REV	PDW REV	DESCRIPTION OF CHANGES	DATE	DR/PR/PCA
UNLESS OTHERWISE SPECIFIED		PROJECTION	SCALE	SIZE
I : ±0.1 III : ±0.1 II : ±0.15 IV : ±0.1 INTERPRET PER ANSI Y14.2M-1994		1	0.300	B
DIMENSIONS ARE IN MILLIMETERS		MATERIAL		
REPLACED		DANFOSS STANDARD		
SURF. AREA (m²)		DESIGNATION		
MASS (kg)		OUTLINE, COMPRESSOR COMMERCIAL		
PRI. REFRIG.		MATERIAL		
PRODUCT FAM.		DANFOSS		
		MAT. NO.		
		Dwg. No. <b>DSR4103B</b>		
		REV <b>38519</b>		
		ECN No. <b>500000038519</b>		
		SHT <b>3</b> of <b>4</b>		

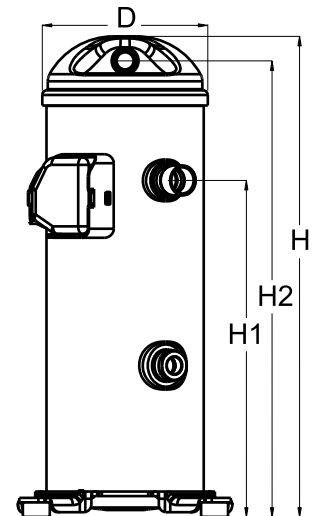
HCM/P086-098

Danfoss can accept no responsibility for possible errors in catalogues, brochures and other printed material. Danfoss reserves the right to alter its products without notice. This also applies to products already on order provided that such alternations can be made without consequential changes being necessary in specifications already agreed. All trademarks in this material are property of the respective companies. Danfoss, the Danfoss logotype and Maneurop are trademarks of Danfoss A/S. All rights reserved.

**General Characteristics**

Model number (on compressor nameplate)		<b>HCP094T2LC7</b>
Code number for Singlepack*		120U0911
Code number for Industrial pack**		120U0908
Drawing number		0SR6169B-3
Suction and discharge connections		Brazed
Suction connection		1-1/8" ODF
Discharge connection		7/8" ODF
Oil sight glass		Threaded
Oil equalization connection		None
Oil drain connection		None
LP gauge port		None
IPR valve		None
Swept volume		7.69 in <sup>3</sup> /rev
Displacement @ Nominal speed		774 cfh @ 2900 rpm - 935 cfh @ 3500 rpm
Net weight		97 lbs
Oil charge		90 oz, PVE - -
Maximum system test pressure Low Side / High side		- psi / - psi
Maximum differential test pressure		- psi
Maximum number of starts per hour		-
Refrigerant charge limit		16 lbs
Approved refrigerants		R407C

**Dimensions**

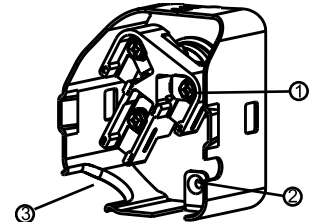


D=7.2 inch, H=21.1 inch,  
H1=14.5 inch, H2=20 inch, H3=- inch

**Electrical Characteristics**

Nominal voltage		208-230V/3/60Hz
Voltage range		188-253 V
Winding resistance between phases 1-2 +/- 7% at 77°F		0.370 Ω
Winding resistance between phases 1-3 +/- 7% at 77°F		0.370 Ω
Winding resistance between phases 2-3 +/- 7% at 77°F		0.370 Ω
Rated Load Amps (RLA)		25.6 A
Maximum Continuous Current (MCC)		40 A
Locked Rotor Amps (LRA)		190 A
Motor protection		Internal overload protector

**Terminal box**



IP22

- 1: Screw connectors 10-32 UNF x 9.5
- 2: Earth connection
- 3: Power cable passage

**Recommended Installation torques**

Oil sight glass		39 ft.lbs
Power connections / Earth connection		2 ft.lbs / 1 ft.lbs

**Parts shipped with compressor**

Mounting kit with grommets and sleeves		
Initial oil charge		
Installation instructions		

**Approvals** : CE certified, UL certified (file SA11565), -

\*Singlepack: Compressor in cardboard box

\*\*Industrial pack: 12 or 16 Unboxed compressors on pallet

<b>Rotolock accessories, suction side</b>	<b>Code no.</b>
Solder sleeve, P02 (1-3/4" Rotolock, 1-1/8" ODF)	8153004
Angle adapter, C02 (1-3/4" Rotolock, 1-1/8" ODF)	8168005
Rotolock valve, V02 (1-3/4" Rotolock, 1-1/8" ODF)	8168028
Gasket, 1-3/4"	8156132

<b>Rotolock accessories, discharge side</b>	<b>Code no.</b>
Rotolock valve, V05 (1-1/4" Rotolock, 7/8" ODF)	8168030
Gasket, 1-3/4"	8156132

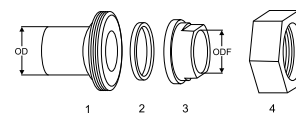
<b>Rotolock accessories, sets</b>	<b>Code no.</b>
Solder sleeve adapter set, 1-1/8" ODF & 7/8" ODF	120Z0125
Valve set, V02(1"3/4~1"1/8), V05(1"1/4~7/8")	120Z0403
Gasket set, 1", 1-1/4", 1-3/4", OSG gaskets black & white	8156009

<b>Oil / lubricants</b>	<b>Code no.</b>
PVE lubricant, 320HV (FVC68D), 1 litre can	120Z5034

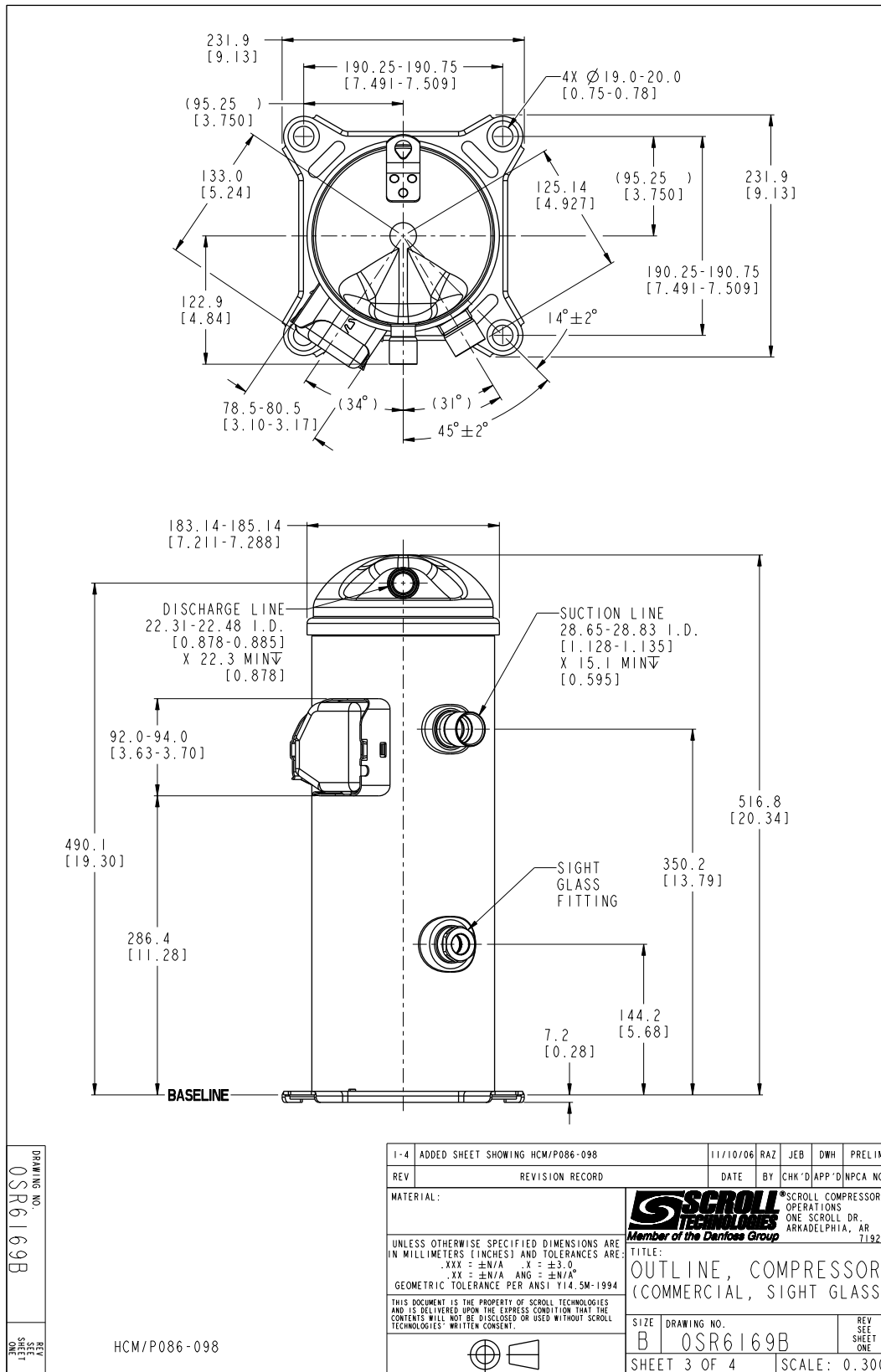
<b>Crankcase heaters</b>	<b>Code no.</b>
Belt type crankcase heater, 65 W, 230 V, CE mark, UL	120Z0059
Belt type crankcase heater, 70 W, 240 V, CE mark, UL	120Z5040

<b>Miscellaneous accessories</b>	<b>Code no.</b>
Acoustic hood	120Z5045
Discharge thermostat kit	7750009

<b>Spare parts</b>	<b>Code no.</b>
Mounting kit for 1 scroll compressor including 4 grommets, 4 sleeves, 4 bolts, 4 washers	120Z5005
Mounting kit for 1 scroll compressor including 4 grommets, 4 sleeves, 4 bolts, 4 washers	120Z5031

**Solder sleeve adapter set**


- 1: Rotolock adapter (Suc & Dis)
- 2: Gasket (Suc & Dis)
- 3: Solder sleeve (Suc & Dis)
- 4: Rotolock nut (Suc & Dis)

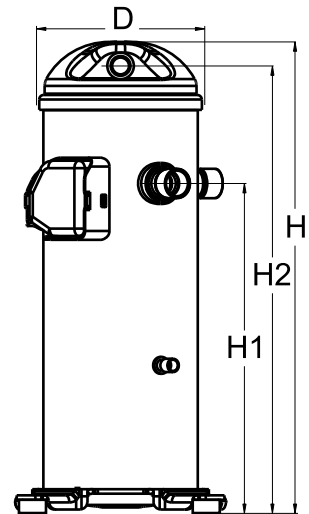


Danfoss can accept no responsibility for possible errors in catalogues, brochures and other printed material. Danfoss reserves the right to alter its products without notice. This also applies to products already on order provided that such alternations can be made without subsequential changes being necessary in specifications already agreed. All trademarks in this material are property of the respective companies. Danfoss, the Danfoss logotype and Maneurop are trademarks of Danfoss A/S. All rights reserved.

**General Characteristics**

Model number (on compressor nameplate)		<b>HCP094T2LC8</b>
Code number for Industrial pack**		120U0913
Drawing number		0SR4103B-3
Suction and discharge connections		Brazed
Suction connection		1-1/8" ODF
Discharge connection		7/8" ODF
Oil sight glass		None
Oil equalization connection		None
Oil drain connection		None
LP gauge port		None
IPR valve		None
Swept volume		7.69 in <sup>3</sup> /rev
Displacement @ Nominal speed		774 cfm @ 2900 rpm - 935 cfm @ 3500 rpm
Net weight		97 lbs
Oil charge		90 oz, PVE --
Maximum system test pressure Low Side / High side		- psi / - psi
Maximum differential test pressure		- psi
Maximum number of starts per hour		-
Refrigerant charge limit		16 lbs
Approved refrigerants		R407C

**Dimensions**

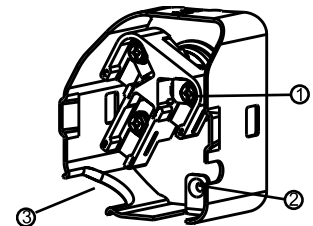


D=7.2 inch, H=21.1 inch,  
H1=14.5 inch, H2=20 inch, H3=- inch

**Electrical Characteristics**

Nominal voltage		208-230V/3/60Hz
Voltage range		188-253 V
Winding resistance between phases 1-2 +/- 7% at 77°F		0.370 Ω
Winding resistance between phases 1-3 +/- 7% at 77°F		0.370 Ω
Winding resistance between phases 2-3 +/- 7% at 77°F		0.370 Ω
Rated Load Amps (RLA)		25.6 A
Maximum Continuous Current (MCC)		40 A
Locked Rotor Amps (LRA)		190 A
Motor protection		Internal overload protector

**Terminal box**



IP22

- 1: Screw connectors 10-32 UNF x 9.5
- 2: Earth connection
- 3: Power cable passage

**Recommended Installation torques**

Oil sight glass		39 ft.lbs
Power connections / Earth connection		2 ft.lbs / 1 ft.lbs

**Parts shipped with compressor**

Mounting kit with grommets and sleeves	
Initial oil charge	
Installation instructions	

**Approvals:** CE certified, UL certified (file SA11565), -

\*Singlepack: Compressor in cardboard box

\*\*Industrial pack: 12 or 16 Unboxed compressors on pallet



Rotolock accessories, suction side	Code no.
Solder sleeve, P02 (1-3/4" Rotolock, 1-1/8" ODF)	8153004
Angle adapter, C02 (1-3/4" Rotolock, 1-1/8" ODF)	8168005
Rotolock valve, V02 (1-3/4" Rotolock, 1-1/8" ODF)	8168028
Gasket, 1-3/4"	8156132

Rotolock accessories, discharge side	Code no.
Rotolock valve, V05 (1-1/4" Rotolock, 7/8" ODF)	8168030
Gasket, 1-3/4"	8156132

Rotolock accessories, sets	Code no.
Solder sleeve adapter set, 1-1/8" ODF & 7/8" ODF	120Z0125
Valve set, V02(1"3/4~1"1/8), V05(1"1/4~7/8")	120Z0403
Gasket set, 1", 1-1/4", 1-3/4", OSG gaskets black & white	8156009

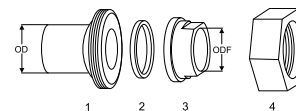
Oil / lubricants	Code no.
PVE lubricant, 320HV (FVC68D), 1 litre can	120Z5034

Crankcase heaters	Code no.
Belt type crankcase heater, 65 W, 230 V, CE mark, UL	120Z0059
Belt type crankcase heater, 70 W, 240 V, CE mark, UL	120Z5040

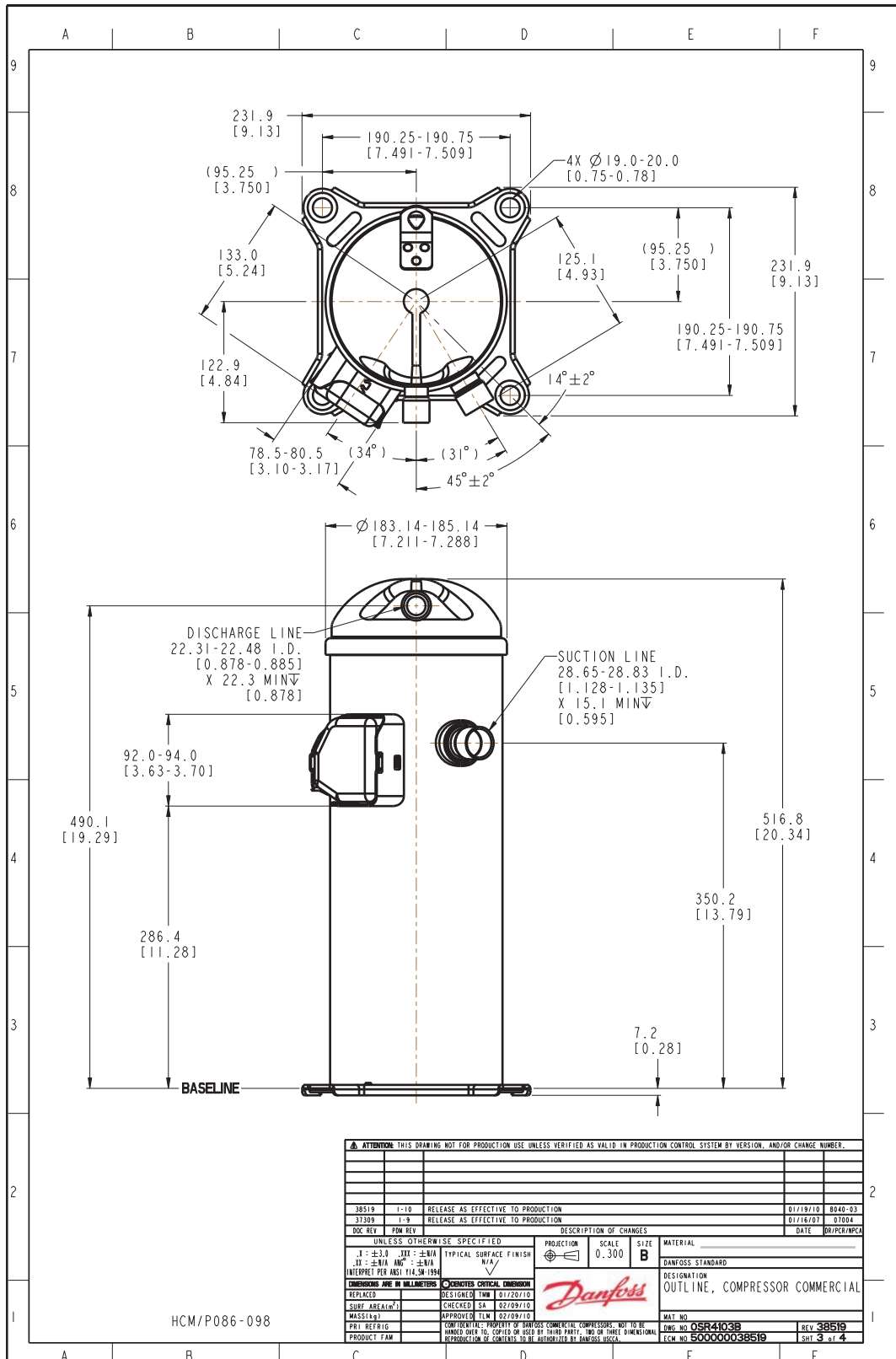
Miscellaneous accessories	Code no.
Acoustic hood	120Z5045
Discharge thermostat kit	7750009

Spare parts	Code no.
Mounting kit for 1 scroll compressor including 4 grommets, 4 sleeves, 4 bolts, 4 washers	120Z5005
Mounting kit for 1 scroll compressor including 4 grommets, 4 sleeves, 4 bolts, 4 washers	120Z5031

Solder sleeve adapter set



- 1: Rotolock adapter (Suc & Dis)
- 2: Gasket (Suc & Dis)
- 3: Solder sleeve (Suc & Dis)
- 4: Rotolock nut (Suc & Dis)



Danfoss can accept no responsibility for possible errors in catalogues, brochures and other printed material. Danfoss reserves the right to alter its products without notice. This also applies to products already on order provided that such alternations can be made without consequential changes being necessary in specifications already agreed. All trademarks in this material are property of the respective companies. Danfoss, the Danfoss logotype and Maneurop are trademarks of Danfoss A/S. All rights reserved.