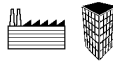


Sensors – High Pressure

Series 750B-C3 Chamber with 3 Probes



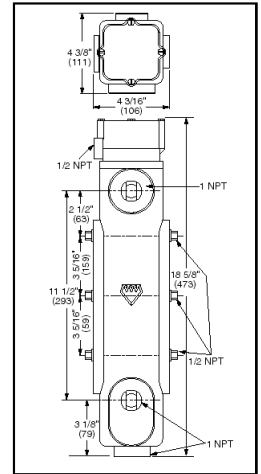
Series 750B-C4 Chamber with 4 Probes

Specifications Chamber

- NEMA 4X chamber enclosure and listed
- Maximum steam pressure 250 psig (17.6 kg/cm²)
- Designed for use with the Series 750B remote mount control module to make a complete system for level control in a boiler or other vessel. See page 78.

Ordering Information

Model Number	Part Number	Description	Weight lbs. (kg)
750B-C3	176316	Cast iron chamber w/3 probes	26 (11.8)
750B-C4	176317	Cast iron chamber w/4 probes	26 (11.8)

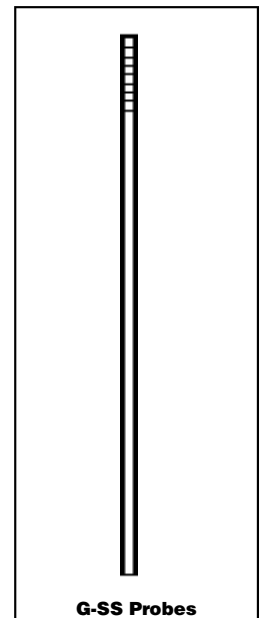
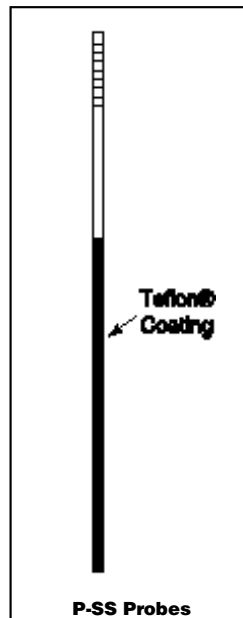


Probe Rods

- Stainless steel - Series 316 material
- Teflon® coated probe ends provide protection from false signals [available on 24-72" (610 - 1829mm) probes]
- For use with RS sensors

Ordering Information

Model Number	Part Number	Description	Weight lbs. (kg)
G-2-SS	179156	24" (610mm) Ground Probe	1.0 (.5)
G-3-SS	179157	36" (914mm) Ground Probe	1.5 (.7)
G-4-SS	179158	48" (1219mm) Ground Probe	2.0 (.9)
G-5-SS	179159	60" (1524mm) Ground Probe	2.5 (1.1)
G-6-SS	179160	72" (1829mm) Ground Probe	3.0 (1.4)
P-1/3 SS	176208	4 1/2" (114mm) Probe	0.5 (.23)
P-1-SS	179530	12" (305mm) Probe	0.5 (.23)
P-2-SS	179535	24" (610mm) Probe w/Teflon®	1.0 (.5)
P-3-SS	179540	36" (914mm) Probe w/Teflon®	1.5 (.7)
P-4-SS	179545	48" (1219mm) Probe w/Teflon®	2.0 (.9)
P-5-SS	179550	60" (1524mm) Probe w/Teflon®	2.5 (1.1)
P-6-SS	179555	72" (1829mm) Probe w/Teflon®	3.0 (1.4)



Selecting control according to anticipated use, the sensor should be selected according to the number of probes required. The probe rods are ordered separately according to length needed. The control, sensor and each probe rod must be specified separately, using the appropriate model and part numbers.