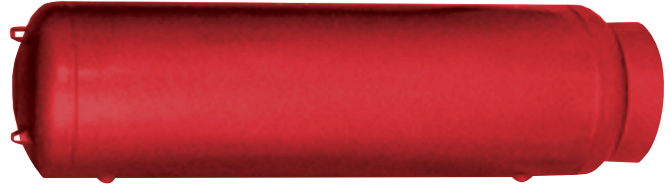


- Absorbs the expansion forces of system water and provides proper pressurization under varying operating conditions
- Meets ASME Section VIII, Division 1 Standards
- Tanks Sizes: 15-505 gallons
- Standard Working Pressures:
  - 150 PSI for 15-100 gallon tanks
  - 125 PSI for 120-505 gallon tanks
- Higher Pressure Vessels Available (up to 300 PSI)
- High Maximum Design Temperature 650°F
- Gauge Glass Tappings are Standard
- Custom Tanks with Additional Tappings and Alternative Materials of Construction are Available



**Designed for Closed Hydronic Heating and Cooling Systems**

# ASME Compression Tanks

PLAIN STEEL COMPRESSION TANKS



# Plain Steel ASME Compression Tanks

## DESCRIPTION

The plain steel compression tank absorbs the expansion forces of the system water and provides proper pressurization under varying operating conditions. When used with Airtrol® Fittings, it provides positive air control.

## CONSTRUCTION

These tanks are constructed of carbon steel in accordance with Section VIII, Division 1 of the ASME Boiler and Pressure Vessel Code - and so stamped.

## PERFORMANCE LIMITATIONS

Maximum Design Pressure:

Model 15 through 100 .....150 PSIG (1034kPa)

Model 120 through 505 .....125 PSIG (862kPa)

Maximum Design Temperature:

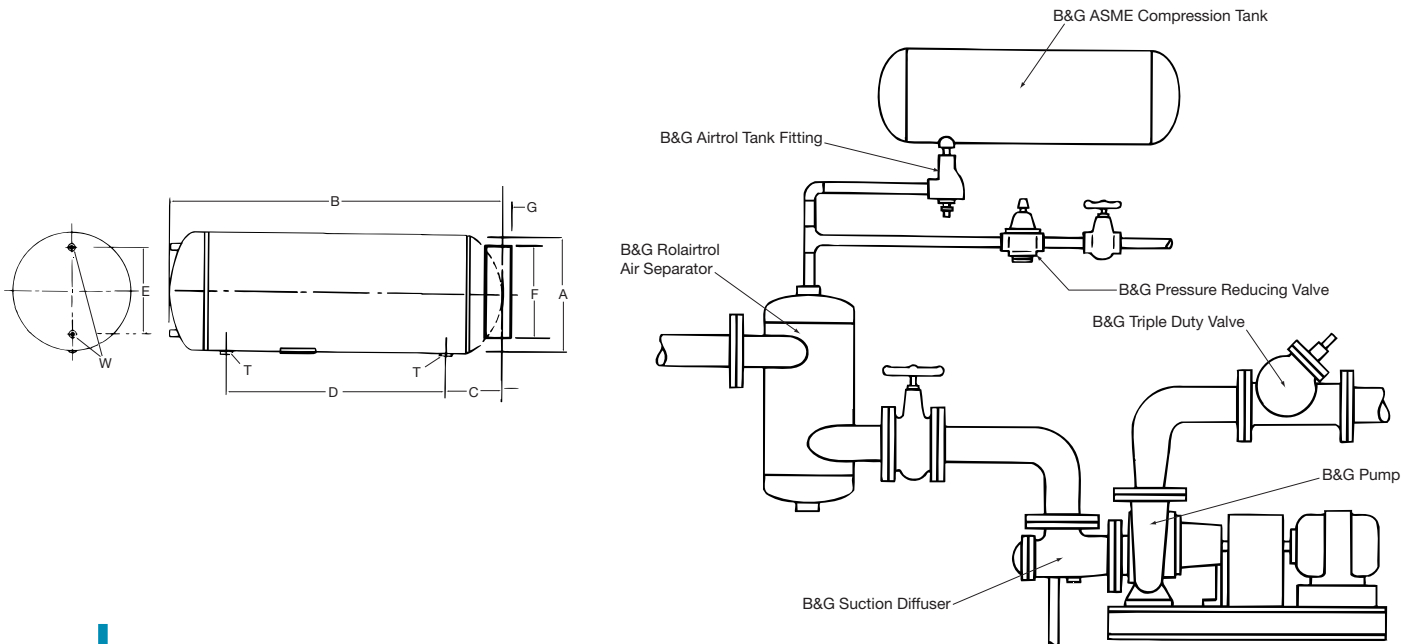
All Models ..... 650°F (343°C)

## Dimensions: Gallons (Ltrs.), Inches (mm), Weights: LBS (KG)

PART NUMBER	VOLUME (GALLONS)	REQ'D AIRTROL TANK FITTING	A DIAMETER	B LENGTH	C	D	E	F	G	TAPPINGS NPT		APPROX. SHIPPING WEIGHT
										T	W	
116029	15 (57)	ATF-12	12 (305)	33 (838)	7 (178)	19 (483)	8 (203)	11 1/2 (292)	1 1/8 (29)	1	1/2	50 (23)
116030	24 (91)	ATF-12	12 (305)	51 (1295)	7 (178)	37 (940)	8 (203)	11 1/2 (292)	1 1/8 (29)	1	1/2	72 (33)
116031	30 (114)	ATF-12	14 (356)	48 (1219)	8 3/8 (213)	31 1/4 (794)	10 (254)	12 (305)	1 3/8 (35)	1	1/2	80 (36)
116032	40 (151)	ATF-12	14 (356)	63 (1600)	8 3/8 (213)	46 1/4 (1175)	10 (254)	12 (305)	1 3/8 (35)	1	1/2	104 (47)
116033	60 (227)	ATF-16	16 (406)	72 (1829)	9 1/4 (235)	53 1/2 (1359)	12 (305)	14 (356)	1 (25)	1	1/2	134 (61)
116034	80 (303)	ATF-20	20 (508)	62 (1575)	10 (254)	42 (1067)	16 (406)	18 (457)	2 5/16 (59)	1	1/2	160 (73)
116035	100 (379)	ATF-20 or ATFL	20 (508)	78 (1981)	10 (254)	58 (1473)	16 (406)	18 (457)	2 5/16 (59)	1	1/2	186 (84)
116036	120 (454)	ATF-24 or ATFL	24 (610)	65 (1651)	11 1/8 (283)	42 3/4 (1086)	20 (508)	22 (559)	1 1/2 (38)	1	1/2	217 (98)
116037	135 (511)	ATF-24 or ATFL	24 (610)	72 (1829)	11 1/8 (283)	49 3/4 (1264)	20 (508)	22 (559)	1 1/2 (38)	1	1/2	230 (104)
116038	175 (662)	ATFL	30 (762)	62 1/4 (1581)	13 1/2 (343)	35 1/4 (895)	22 (559)	26 (660)	1 3/8 (35)	1 1/2	1/2	320 (145)
116039	220 (833)	ATFL	30 (762)	77 (1956)	13 1/2 (343)	50 (1270)	22 (559)	26 (660)	1 3/8 (35)	1 1/2	1/2	370 (168)
116040	240 (908)	ATFL	30 (762)	84 (2134)	13 1/2 (343)	57 (1448)	22 (559)	26 (660)	1 3/8 (35)	1 1/2	1/2	420 (191)
116041	305 (1154)	ATFL	30 (762)	105 3/4 (2686)	13 1/2 (343)	78 3/4 (2000)	22 (559)	26 (660)	1 3/8 (35)	1 1/2	1/2	482 (219)
116042	400 (1514)	ATFL	36 (914)	93 (2362)	14 3/4 (375)	63 1/2 (1613)	28 (711)	30 (762)	1 (25)	1 1/2	1/2	656 (298)
116840	505 (1911)	ATFL	36 (914)	116 (2946)	14 3/4 (375)	86 1/2 (2197)	28 (711)	30 (762)	1 1/8 (29)	1 1/2	1/2	745 (338)

Dimensions subject to change. Not to be used for construction purposes.

## TYPICAL APPLICATION



Xylem Inc.  
8200 N. Austin Avenue  
Morton Grove, Illinois 60053  
Phone: (847) 966-3700  
Fax: (847) 965-8379  
www.bellgossett.com